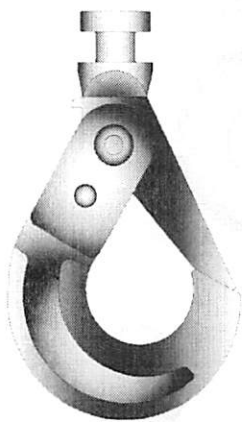


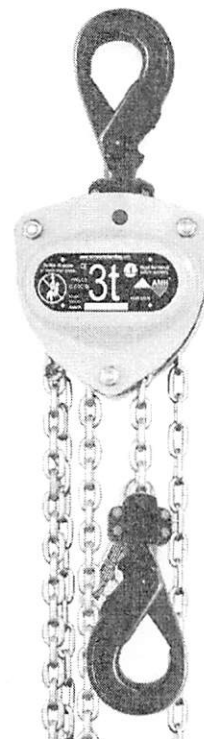
Options & Accessories



Self-Locking Hook



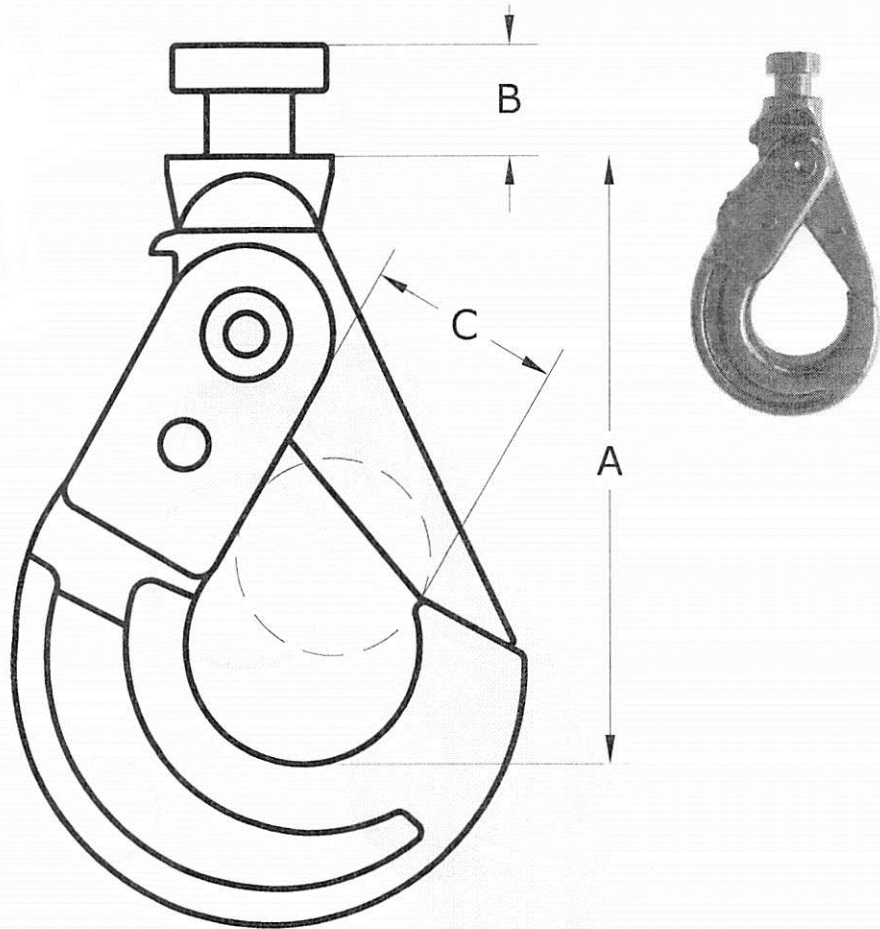
No more worries about inspections revealing missing or broken latches



AMH sees the trend of increasing demand for self-locking hooks in wire-rope and chain-sling applications. All Material Handling therefore presents its new Self-Locking Hook for MA (Hand Chain) and LA (Lever Chain) Series hoist.

Self-locking hooks are designed to close by the load being lifted, and opened by a hidden trigger that is protected from snagging by being flush to the surface of the hook. They are easily assembled into standard bolted hook blocks, allowing complete hook inspection as per ASME B30 safety code. One of the best features of a self-locking hook is that its latch cannot go missing.

When hoist ordered with Self Locking hook option "L", the hoist will be final assembled and tested at one of our USA service centers.



Hook Dimensions

Part #	Models used on	A		B		C	
		mm	inch	mm	inch	mm	inch
HOOK-SL010	LA008, LA010, MA010	113	4.4	15.5	0.6	33	1.3
HOOK-SL016	LA016, MA015	113	4.4	17.5	0.7	33	1.3
HOOK-SL025	LA020, LA025, MA020	139	5.5	19.5	0.8	45	1.8
HOOK-SL032	LA032, MA030	172	6.8	23	0.9	52	2.0
HOOK-SL063T	LA063 Top only, MA050	204	8.0	28	1.1	64	2.5
HOOK-SL063B	LA063 Bottom only	198	7.8	34	1.3	64	2.5

Order individually by the **Part #** from above chart or,

Specify **Option L**, when ordering LA lever or MA hand chain hoist, to receive hoist assembled and tested with Self locking hooks on both top and bottom.