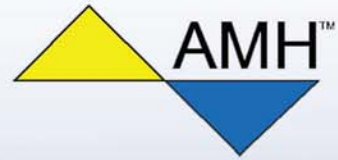


2013-P

# ALL MATERIAL HANDLING Lifting Equipment



# LIFTING EQUIPMENT



3

## HAND CHAIN HOIST

*\*NEW USA LOAD CHAIN OPTIONS AVAILABLE*



5

## LEVER CHAIN HOIST

*\*NEW USA LOAD CHAIN OPTIONS AVAILABLE*



7

## MINI CHAIN HOIST



8

## CABLE PULLERS



9

## PUSH AND GEARED TROLLEY



11

## ARMY STYLE LOW HEADROOM TROLLEY



13

## BEAM CLAMPS & LOAD CHAIN



14

## WALK-E-DOG



15

## UNIVERSAL PLATE LIFTING CLAMP



16

## MASTER LINKS AND SUB-ASSEMBLIES GRADE 80 + 100



17

## ALLOY CHAIN FITTINGS GRADE 100



19

## ALLOY CHAIN FITTINGS GRADE 80



23

## HOIST RINGS & WELD-ON LOAD RINGS



24

## SYNTHETIC WEB SLINGS



26

## SYNTHETIC ROUND SLINGS



26

## ALLOY SYNTHETIC SLING HOOKS

# ALL MATERIAL HANDLING

---

# Lifting Equipment



## ABOUT US...

AMH, All Material Handling, Inc. is a privately owned and operated provider of quality material handling equipment servicing applications in; Construction, Industrial Supply, Maintenance, Marine, Military, Mining, Petrochemical, Petroleum, Railroad, Rental, Ship Building and Utilities. AMH partners have more than 80 years of combined experience in manufacturing, engineering and marketing of lifting equipment.

AMH distributors are found throughout North America. They are supported by our main office located in Chicago, IL and a network of Sales, Service and Distribution Centers in Los Angeles, Houston, Atlanta and Des Moines, Iowa.

## OUR PHILOSOPHY IS...

to be a leading provider of quality material handling product that meet our customers expectation of value and service.

## THE FUTURE...

will be met with new and improved product and supply strategy in support of the American work-place.

## OUR SERVICE...

is in support of our distributors and their customers by way of a well stocked and quick responding service and distribution centers and by providing technical support to help grow our customer's businesses.

## AMH DISTRIBUTION NETWORK



**AMH MAIN OFFICE  
CHICAGO, ILLINOIS**



**SERVICE CENTER  
DES MOINES, IOWA**



**SERVICE CENTER  
HOUSTON, TEXAS**



**SERVICE CENTER  
LOS ANGELES, CALIFORNIA**



**SERVICE CENTER  
ATLANTA, GEORGIA**

## 1 YEAR LIMITED WARRANTY FOR LIFTING EQUIPMENT

We make every effort to assure that our lifting equipment products meet high quality and durability standards and we warrant to the original consumer of our products that each product be free from defects in material and workmanship as follows:

1 Year limited warranty on all our products. The warranty does not apply to defects due directly or indirectly to misuse, negligence or accidents, repairs or alterations outside our facilities or to a lack of maintenance. We limit all warranties to the period specified above from the date the product was purchased at retail. Please retain your dated sales receipt as proof of purchase to validate the warranty period. Except as stated herein, any implied warranties or merchantability and fitness are excluded. Some states do not allow limitations on how long the warranty lasts; hence the above limitation may not apply to you. We shall in no event be liable for death, injuries to persons or property or for incidental, contingent, special or consequential damages arising from the use of our products. Some states do not allow the exclusions or limitation of incidental or consequential damages; hence the above limitations or exclusions may not apply to you. To take advantage of this warranty, the product must be returned for examination, postage prepaid to an authorized service station. Proof of purchase date and an explanation of the complaint must accompany the product. If our inspection discloses a defect we will either repair or replace the product or refund the purchase price, if we cannot quickly provide a repair or replacement, if you are willing to accept such a refund. We will return repaired products or the replacement at our expense, but if we find that there is no defect, or that the defect resulted from causes not within the scope of this warranty, then the user must bear the cost of returning the product. This warranty gives you specific legal rights, and you may also have other rights that vary from state to state.



AMH IS A MEMBER OF  
AWRF, STAFDA & ISA



**MA** **CE**  
**Series**

# HAND CHAIN HOIST

## 1/2 to 30 Metric tonne capacity

### FEATURES

- Increased efficiency by additional pinion shaft bearing and close tolerances.
- *Hook blocks are bolted allowing complete hook inspection.*
- Lightweight and durable all steel construction with powder coated finish and plated external components to resist corrosion
- Premium Grade 80 Zinc plated alloy load chain.
- *Optional USA made load chain with USA load test at time of purchase is available for all models except 1/2t by specifying option U.*
- Hand chain opening is formed with a radius for smooth operation.
- Sealed ball bearings on the chain wheel maximize efficiency and serviceability.
- Self adjusting double pawl disc type mechanical load brake insures positive load control.
- Double roller guide insures load chain tracking.
- *Optional Overload Protection is new design one directional clutch that will only slip in the lift direction.*
- Meets: ASME/ANSI B30.16, OSHA, NASA-STD-8719.9 and EU Directives: 98/37/EC ATEX rated  $\text{Ex}$  II 3 GD c IIB 54° C X for limited use in Hazardous Environments.



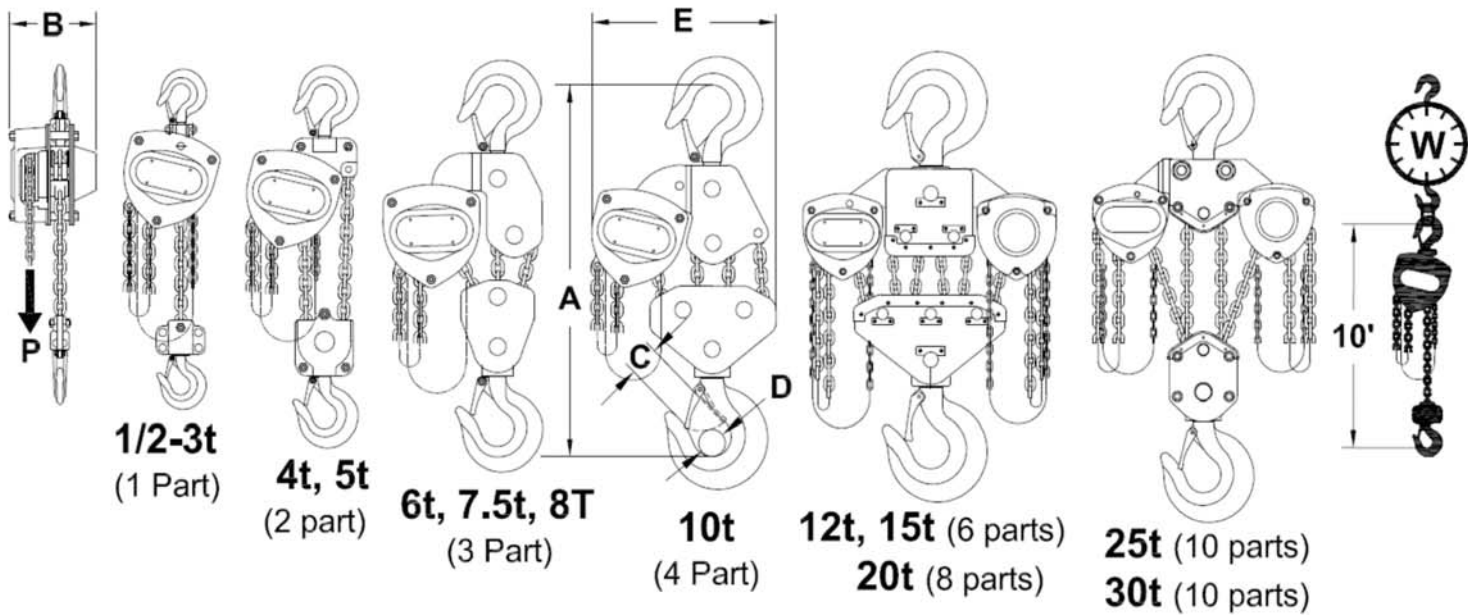
**OUR CHAINS  
ARE ZINC PLATED**

**PLATED FRAME AND GUIDE  
COMPONENTS AND ROUNDED  
HAND CHAIN ENTRANCE**

**NOW ALSO AVAILABLE  
WITH USA CHAIN OPTIONS:**



**I** Before using these products read and follow instructions in the operators manual. Never exceed capacity. Do not use for lifting people or loads over people.



**MA SERIES SPECIFICATIONS and DIMENSIONS (inches and pounds unless noted)**

Base Model	Working Load Limit (WLL)	Fall	Chain (mm)	A" Min.	B"	C"	D"	E"	P (lbs) Max.	W (lbs) /Ft. lift	W <sup>(1)</sup> (lbs) 10 Lift
MA005	1/2t (1100 lbs)	1	5 x 15	13.8	5.4	0.95	0.84	5.7	56	0.74	20
MA010	1t (2200 lbs)	1	6 x 18	15.1	6.1	1.13	1.04	6.3	64	0.92	26
MA015	1.5t (3300 lbs)	1	7 x 21	17.4	6.9	1.30	1.15	7.2	69	1.12	36
MA020	2t (4400 lbs)	1	8 x 24	19.1	7.0	1.46	1.35	8	77	1.30	44
MA030	3t (6600 lbs)	1	10 x 28	21.8	8.1	1.65	1.41	10	84	1.88	72
MA040	4t (8800 lbs)	2	9 x 27	27.1	7.4	1.81	1.74	9.8	67	2.88	93
MA050	5t (11000 lbs)	2	9 x 27	27.1	7.4	1.81	1.74	9.8	84	2.88	93
MA060	6t (13200 lbs)	3	9 x 27	27.2	7.4	1.81	1.74	16.9	66	4.13	136
MA075	7.5t (16500 lbs)	3	9 x 27	27.2	7.4	2.06	2.24	16.9	83	4.13	136
MA080	8T (16000 lbs)	3	9 x 27	27.2	7.4	2.06	2.24	16.9	80	4.13	136
MA100	10t (22000 lbs)	4	9 x 27	30.1	7.4	2.06	2.24	18.1	86	5.38	165
MA120	12t (26400 lbs)	6	9 x 27	35.4	7.9	3.21	2.66	28.3	2 x 68	8.26	332
MA150	15t (33000 lbs)	6	9 x 27	35.4	7.9	3.21	2.66	28.3	2 x 85	8.26	332
MA200	20t (44000 lbs)	8	9 x 27	37.4	7.9	3.21	2.66	33.5	2 x 86	10.76	422
MA250	25t (55000 lbs)	10	9 x 27	45.3	14.5	3.21	2.66	27.5	2 x 89	13.26	509
MA300	30t (66000 lbs)	10	10 x 28	45.3	15.3	3.21	2.66	29.5	2 x 87	15.76	546

(1) Shipping weight can be estimated by adding approx. 25% to "W" hanging weight.

Standard lift = 10, 15 and 20 Ft. hand chain drop is 2 Ft less than lift. Custom lifts are available.

Option: V = Overload Protection, new design one-way operation that will lower any load. **ONE WAY**

U = USA made load chain including USA load test (except 1/2t).

How to Order, by descriptive model number

Example: Model MA050-20-18VU



Before using these products; Read and follow instructions in the operator's manual. Never exceed capacity. Do not use for lifting people or loads over people





# LA CE Series

## LEVER CHAIN HOIST

### FEATURES

- *Dual rated with more choices of capacity.*
- *Hook blocks are bolted allowing easy disassembly for complete hook inspection.*
- Lightweight and durable all steel construction with powder coated finish and plated external components to resist corrosion.
- Premium Grade 80 Zinc plated alloy load chain.
- *Optional USA made load chain including USA load test at time of purchase is available by specifying option U.*
- Self adjusting double pawl disc type mechanical load brake insures control
- Horseshoe chain guard allows operation in any orientation.
- *Optional Overload Protection is new design one directional clutch that will only slip in the lift direction.*
- Meets: ASME/ANSI B30.21, OSHA, NASA-STD-8719.9 and EU Directives: 98/37/EC ATEX rated  $\text{Ex}$  II 3 GD IIB 54 o C X for limited use in Hazardous Environments.

### DUAL RATED

US Ton	Metric Tonne
3/4T	0.8t
1T	1.0t
1 3/4T	1.6t
2 1/4T	2.0t
2 3/4T	2.5t
3 1/2T	3.2t
7T	6.3t
10T	9.0t



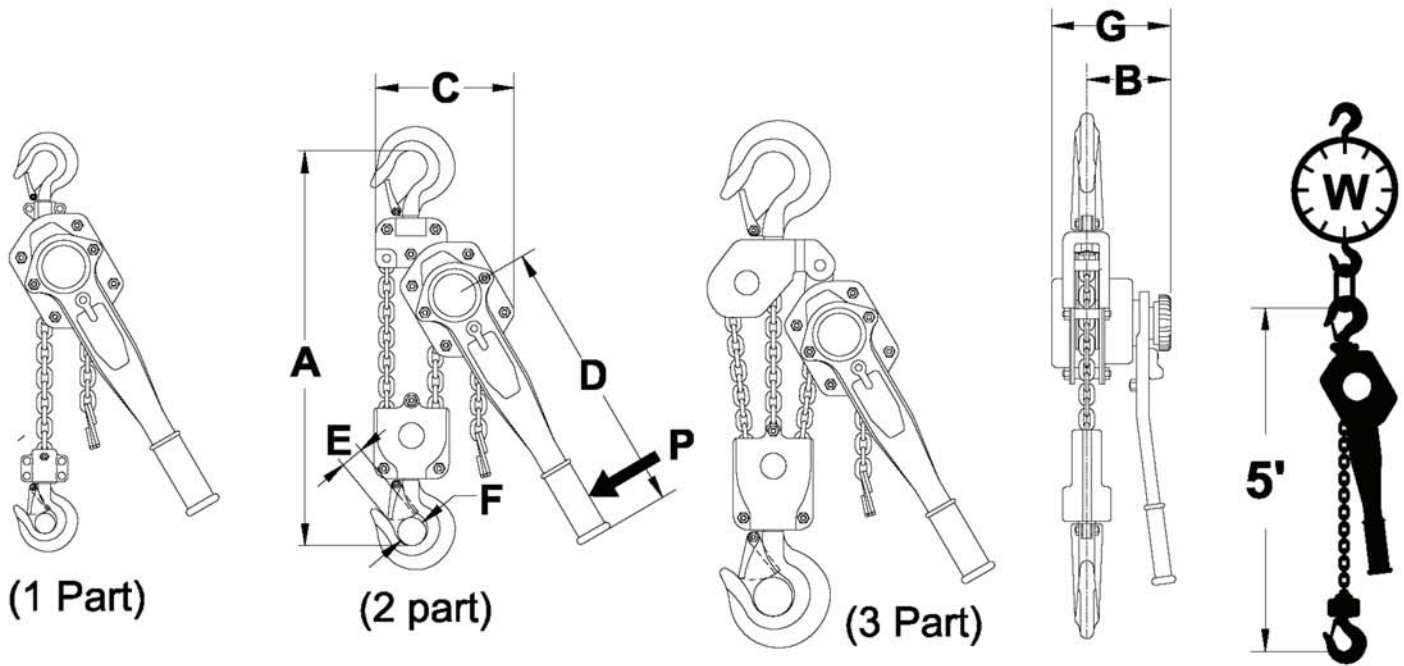
**NOW ALSO AVAILABLE  
WITH USA CHAIN  
OPTIONS:**



**HORSESHOE  
SHAPE  
CHAIN GUIDE**



**SHIPYARD  
HOOK  
OPTION**



**Working Load Limit (WLL) SPECIFICATIONS (Inches and pounds)**

Base Model	US Ton	Metric Tonne	* Min. Load		Chain	Parts	A"	B"	C"	D"	E"	F"	G"	P (Lbs)	W (Lbs) / Ft Lift	W <sup>(1)</sup> (Lbs) 5 Ft Lift
			Lbs	Kg												
LA008	¾+	0.8	44	20	C6X18Z	1	13.4	3.9	5.2	10.5	1.02	0.98	6.2	47	0.54	14.9
LA010	1+	1.0	44	20	C6X18Z	1	13.4	3.9	5.2	12.1	1.02	0.98	6.2	51	0.54	15.3
LA016	1 ¼	1.6	70	32	C7X21Z	1	15.7	4.4	5.7	14.0	1.14	1.18	7.2	66	0.74	24.1
LA020	2 ¼	2.0	88	40	C8X24Z	1	18.1	4.6	7.6	14.0	1.38	1.30	8.1	66	0.92	36.2
LA025	2 ¾	2.5	110	50	C9X27Z	1	19.1	4.6	7.6	14.0	1.38	1.30	8.1	74	1.25	37.9
LA032	3 ½	3.2	141	64	C10X28Z	1	20.5	4.8	7.8	16.5	1.46	1.42	8.3	72	1.50	44.8
LA063	7	6.3	278	126	C10X28Z	2	25.2	4.8	9.1	16.5	1.69	1.69	8.3	74	3.00	66.3
LA090	10	9.0	396	180	C10X28Z	3	28.7	4.8	13.3	16.5	1.85	1.73	8.3	76	4.50	110.6

(1) **Shipping weight** can be estimated by adding approx. 15% to "W" hanging weight  
 \* **Minimum Load** is the load required to activate the automatic load brake.

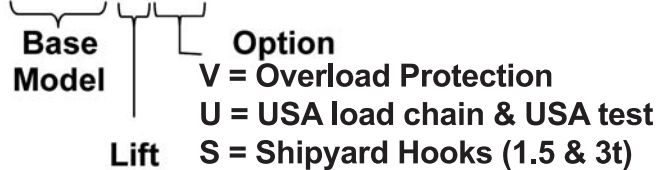
The brake will stop a load even if the operator leaves the unit in free chain mode and in neutral, in a similar way as a seat belt reacts.  
**Standard lift** = 5, 10, 15 and 20 Ft. Custom lifts are available.

**Option: V** = Overload Protection, new design one-way operation that will lower any load. **ONE WAY**

**U** = USA made load chain including USA load test.

**S** = Shipyard Hooks includes top and bottom. Available for 1.5 & 4t only.

**Order by descriptive model number**, example: Model **LA032-20VUS**



Before using these products; Read and follow instructions in the operator's manual. Never exceed capacity. Do not use for lifting people or loads over people



# MINI CHAIN HOIST <sup>CE</sup>

1/4 & 1/2 Metric Ton Capacity

## FEATURES

- Planetary gearing is used to minimize operator effort and to reduce stress on the brake components
- Small size allows operation and storage in tight places.
- Lightweight and durable all steel construction with plated frame components and durable chrome exterior finish to resist corrosion
- Grade 80 Zinc plated alloy load chain
- Sleeve bearings used to maximize serviceability and provide good efficiency
- Self adjusting pawl and disc type mechanical load brake insures positive load control
- Meets: ASME/ANSI B30, OSHA, NASA-STD-8719.9 and EU Directives: 98/37/EC
- ATEX rated  $\text{Ex}$  II 3 GD c IIB 54<sup>o</sup> C X for limited use in Hazardous Environments

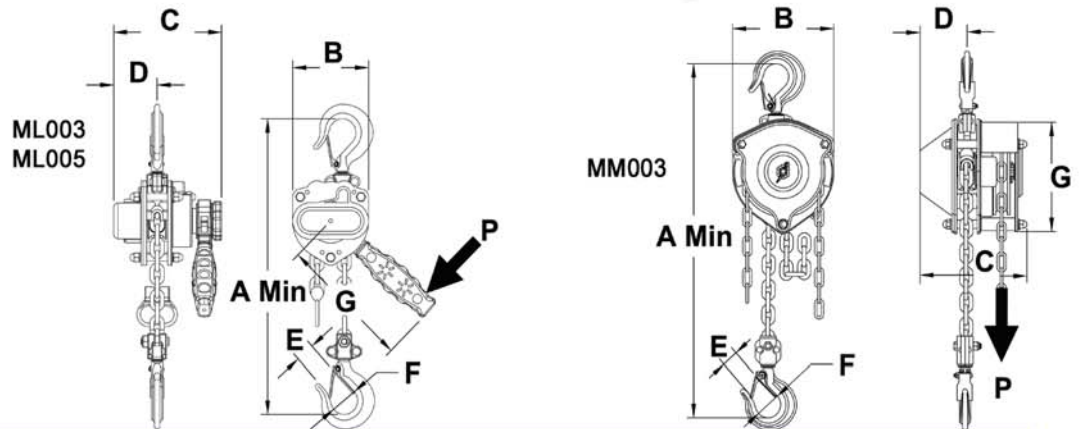
ML003  
ML005

MM003



## OPTIONS

- Extended lifts



## M & L SERIES SPECIFICATIONS and DIMENSIONS (inches and pounds unless noted)

Model	Working load Limit (WLL)		Falls	Chain (mm)	A Min.	B	C	D	E	F	G	P Max.	W	
	Maximum	*Minimum											/Ft. Lift	W
MM003-08-06	1/4t / 550 lbs	0 lbs	1	4 x 12	9.1	3.9	4.3	1.9	0.6	1.0	4.3	26 lbs	0.44 lbs	7.7 lbs
ML003-05	1/4t / 550 lbs	33 lbs	1	4 x 12	8.5	3.0	4.6	1.6	0.6	1.0	6.2	28 lbs	0.25 lbs	4.4 lbs
ML005-05	1/2t / 1100 lbs	40 lbs	1	5 x 15	10.0	3.5	5.3	2.0	0.8	1.3	7.1	40 lbs	0.36 lbs	7.7 lbs

\*Lever Min. capacity is the load required to set the automatic safety brake. The brake will stop a load even if the operator leaves the unit in free chain mode and in neutral, in a similar way as a seat belt reacts. Standard lift is 5 Ft for Lever and 8 Ft for Hand Chain models. All hoist are load tested at 125% Capacity.

**How to Specify Lever Model:** Example ML005-20  
(1/2t Capacity, 20 Ft lift)  
Model – Lift  
ML005 - 20

**How to Specify Hand Chain Model:** Example MM003-20-18  
(1/4t Capacity, 20 Ft lift and 18 Ft. hand chain drop)  
Model – Lift – Drop  
MM003 - 20 - 18



Before using these products read and follow instructions in the operators manual. Never exceed capacity. Do not use for lifting people or loads over people.





# CABLE PULLER



1000 LBS - 3400 LBS Capacity

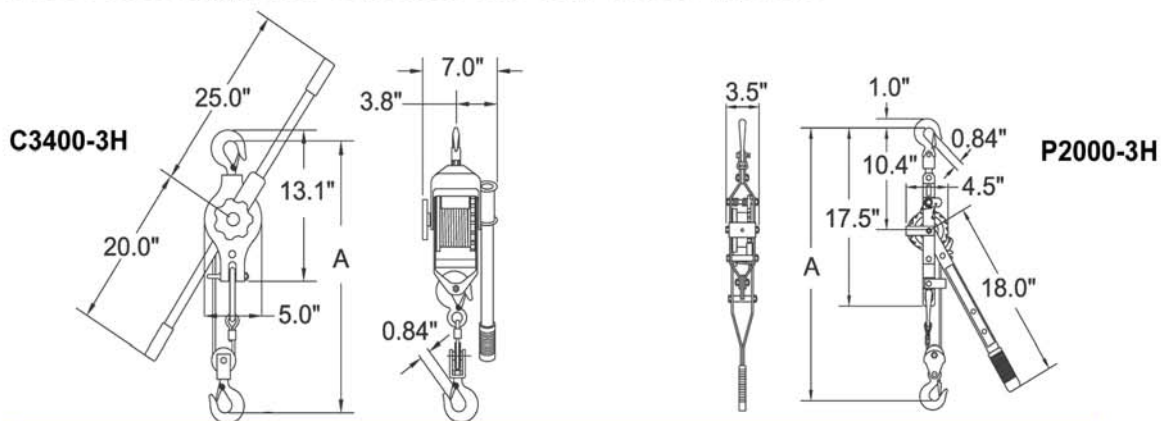
## FEATURES

- 3 Hook design allows 1 or 2 part rigging for a choice of capacity and lift.
- Galvanized aircraft quality wire rope, stainless springs and plated external parts for corrosion resistance.
- C3400 has a lightweight aluminum frame. P2000 has a formed steel frame. Both have a one piece cast aluminum drum.
- C3400 has an overload indicating reversible handle that changes position easily, so pull is always possible in the right direction against the load. The handle on the C3400 bends noticeably when overloaded.
- Safety Latches on alloy steel load hooks.
- "One notch at a time" ratchet and pawl lowering for precise load control.
- Buttress tooth with solid steel drive and holding dog, not laminated plates.
- Spring steel drum shield helps protect and spool cable evenly on drum.
- Meets: ASME/ANSI B30.21, OSHA, and NASA-STD-8719.9 ATEX rated  $\text{Ex}$  II 3 GD c IIB 54<sup>o</sup> C X for limited use in Hazardous Environments



## OPTIONS

- Models with single line or double line only can be quoted.



### SPECIFICATION AND DIMENSIONS (inches and pounds)

Model	ASME B30.21 (4:1 Design Factor) Working Load Limit @ Falls & Lift	"A" Min. Between Hooks	Av. Pull @ Max. Load	Cable Size (in)	Hook Opening Size w/Latch	Lever Length	Weight
P2000-3H	WLL 1000 lbs @ 1 falls & 15 ft lift	21"	60 lbs	3/16	0.84"	18"	10 lbs
	WLL 2000 lbs @ 2 falls & 7.5 ft lift	27.5"					
C3400-3H	WLL 1700 lbs @ 1 falls & 20 ft lift	17"	80 lbs	1/4	0.84"	25"	16 lbs
	WLL 3400 lbs @ 2 falls & 10 ft lift	22"					

# PUSH & GEARED TROLLEY <sup>CE</sup>

1/2 to 30 Metric Ton Capacity

## FEATURES

### The easiest trolley installation ever.

- 1/2 to 5t installation and adjustment by rotating the threaded hanger shaft. 10 to 30t is from one side, trolley hanger shafts are fix mounted to the opposite side plate.
- Trolleys up to 5t have a 5:1 design factor and can be used for manual or powered hoist. Trolleys 10t and greater have a 4:1 design factor and must be de-rated for powered hoist.
- Machined cast iron wheels with universal tread design to fit flat or tapered beam flanges.
- Low headroom design with precision sealed “**lubed for life**” bearings assure smooth operation.
- Durable all steel construction with standard safety lugs.
- Geared trolley hand chain drop is standard with 10 feet.
- Meets: ASME/ANSI B30.16, OSHA, NASA-STD-8719.9, EU Directives: 98/37/EC.
- ATEX rated  $\text{Ex}$  II 3 GD c IIB 54o C X for limited use in Hazardous Environments.



1/2 to 5t  
PT Push Trolley



1/2 to 5t  
GT Geared Trolley

## OPTIONS

- Extended hand chain drop (standard with 10 ft.)
- Wide Flange Kits (must be ordered separately)

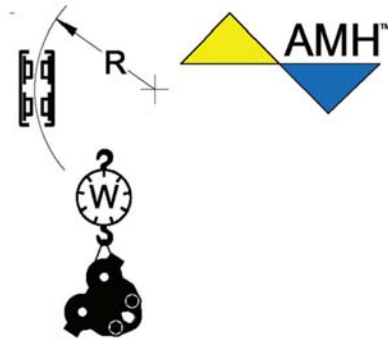
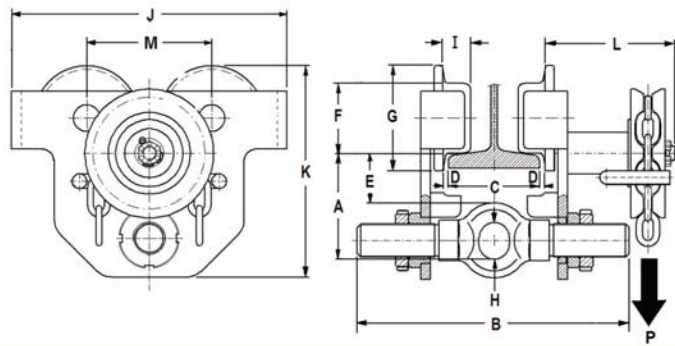
### WIDE FLANGE KIT SPECIFICATIONS and DIMENSIONS (inches & lbs)

WLL	For Model	Trolley w/Kit weight (lbs)	B w/Kit	C w/Kit	Shaft Kit weight (lbs)	Wide Shaft Kit (Order Separately)
1/2t	PT005	19.1	14.8		5.1 lbs	PT005-FLG-12
1t	PT010	25.1	15.2		6.0 lbs	PT010-FLG-12
	GT010	36.1	15.2		6.0 lbs	
2t	PT020	41.8	15.6		9.0 lbs	PT020-FLG-12
	GT020	52.8	15.6	6.3-12.01	9.0 lbs	
3t	PT030	71.5	16.1		12.8 lbs	PT030-FLG-12
	GT030	85.4	16.1		12.8 lbs	
5t	PT050	96.8	16.3		17.9 lbs	PT050-FLG-12
	GT050	110.7	16.3		17.9 lbs	



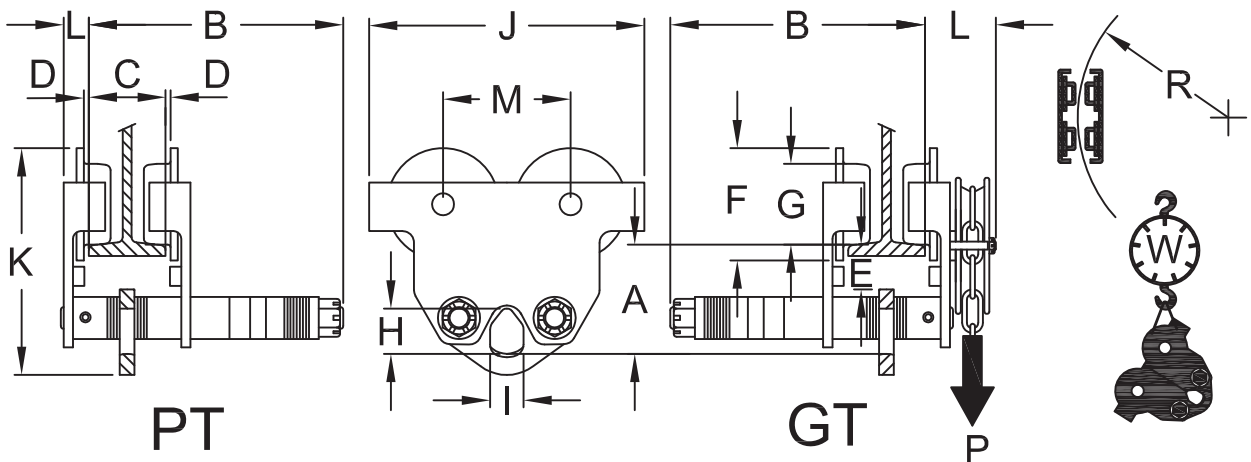
Before using these products read and follow instructions in the operators manual. Never exceed capacity. Do not use for lifting people or loads over people.





**½ to 5 Metric Tonne PT & GT SERIES SPECIFICATIONS and DIMENSIONS (Inches and Pounds)**

Model	WLL (5:1)	A	B1	B2	C1	C2	D	E	F	G	H	I	J	K	L	M (lbs)	P (lbs)	R Min	W1 (lbs)	W2 (lbs)
PT005	1/2t	3.3	11.5	14.8	2.52-8.66	6.30-12.01	0-0.12	1.5	2.3	3.4	1.2	0.9	8.9	6.8	---	4.0	---	36	18	19
PT010	1t	3.7	11.8	15.2	2.52-8.66	6.30-12.01	0-0.12	1.7	2.4	3.7	1.4	0.9	9.9	7.4	---	4.8	---	40	24	25
GT010															4.5	18	35	36		
PT020	2t	4.4	12.2	15.6	3.46-8.66	6.30-12.01	0-0.12	1.6	3.2	4.6	1.9	1.0	11.8	8.9	---	5.5	---	48	40	42
GT020															4.5	34	52	53		
PT030	3t	5.8	12.8	16.1	4.02-8.66	6.30-12.01	0-0.12	2.5	3.9	5.5	2.3	1.3	14.2	11.4	---	6.3	---	52	69	72
GT030															5.3	27	83	85		
PT050	5t	6.3	13.0	16.3	4.49-8.66	6.30-12.01	0-0.12	2.2	4.3	5.9	2.8	1.5	15.4	12.3	---	6.7	---	56	94	97
GT050															5.4	36	108	111		



**10 TO 30 Metric Tonne PT & GT SERIES SPECIFICATIONS in inches (Unless Noted)**

Model	WLL (4:1)	A	B	C	D	E	F	G	H	I	J	K	L	M	P (Lbs)	R Min	W (Lbs)
PT100	10t	7.5	15.5	4.9-12	0.8-0.13	1.8	7.0	5.4	4.4	2.8	18.1	15.5	1.8	7.9	---	79	198
GT100													4.3		54		207
PT160	16t	9.3	17.1	5.4-12	0.8-0.13	2.4	8.9	6.6	5.4	3.7	22.6	19.6	3.0	10.7	---	138	427
GT160													6.0		54		447
GT200	20t	9.2	17.1	5.4-12	0.8-0.13	2.3	8.9	6.9	5.4	3.7	22.6	19.6	6.0	10.7	56	138	458
GT300	30t	11.2	17.8	6.9-12	0.8-0.13	2.7	11.2	9.1	6.1	4.1	28.7	24.4	6.2	13.5	56	236	733



# ARMY STYLE LOW HEADROOM TROLLEY

CE

1/2 to 10 Metric Ton Capacity



## FEATURES

- Low headroom design increases lift height in low ceiling areas
- Direct mount to any standard AMH hoist by replacing the top hook assembly with the trolley assembly.
- Durable all steel construction
- Machined cast iron wheels with precision sealed **“lubed for life”** bearings and universal tread design to fit flat or tapered beam flanges.
- Hand chain drop is 10 feet
- Meets: ASME/ANSI B30.16, OSHA, NASA-STD-8719.9, EU Directives: 98/37/EC
- ATEX rated II 3 GD c IIB 54o C X for limited use in Hazardous Environments

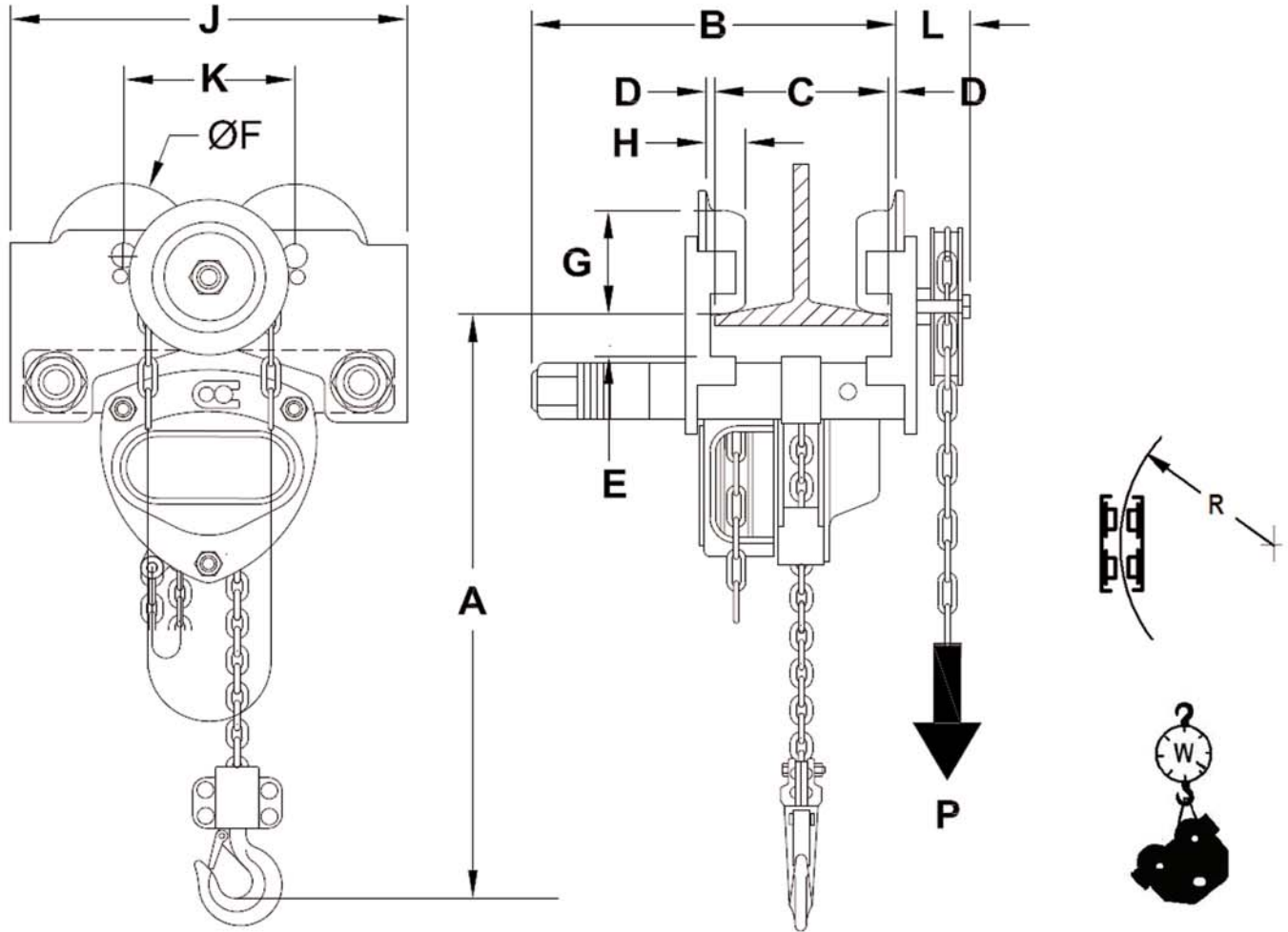
## OPTIONS

- Extended hand chain drop



Before using these products read and follow instructions in the operators manual. Never exceed capacity. Do not use for lifting people or loads over people.





### PTL & GTL SERIES SPECIFICATION AND DIMENSIONS (inches and pounds)

Model	WLL	A	B	C	D	E	F	G	H	J	K	L	P (lbs)	R Min	Includes Hoist W (lbs)
PTL005	1/2t	11.8	9.7	1.97- 7.99	0.06-0.12	1.2	3.1	2.2	0.75	10.2	3.9	3.0	-----	33	37
GTL005-10													6		46
PTL010	1t	13.0	14.1	2.52-12.01	0.06-0.12	1.4	3.8	2.7	0.79	11.5	4.9	3.1	-----	39	55
GTL010-10													11		64
PTL020	2t	16.2	14.4	3.46-12.01	0.06-0.12	1.5	4.3	3.2	0.94	14.1	5.3	3.2	-----	43	104
GTL020-10													20		113
PTL030	3t	18.1	14.7	3.94-12.01	0.06-0.12	1.6	5.2	3.9	1.06	17.1	6.2	3.4	-----	51	143
GTL030-10													21		152
PTL050	5t	23.0	15.1	4.49-12.01	0.06-0.12	1.7	5.7	4.3	1.42	17.6	6.7	3.6	-----	55	199
GTL050-10													31		210
PTL075	7.5t	26.4	16.4	4.88-12.01	0.08-0.14	1.8	6.9	5.4	1.65	17.4	7.9	4.3	-----	78	333
GTL075-10													4.1		344
PTL100	10t	29.3	16.4	4.88-12.01	0.08-0.14	1.8	6.9	5.4	1.65	17.4	7.9	4.3	-----	78	363
GTL100-10													54		374

**How to specify Model:** Example **GTL050-20** hand geared low headroom trolley (5t Capacity with 20 Ft hand chain drop Model - Drop

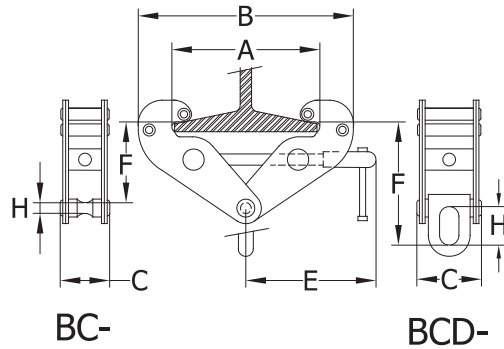
**GTL050-20 Note:** If factory assembly to a hoist is required then note on the order.

# BEAM CLAMPS

## 1 to 10 Metric Tonne

### FEATURES

- The easy way to install a fixed hoist mount or rigging point.
- Simple installation by hand, no tools required.
- Compact and portable low headroom design.
- Meets OSHA, ASME B30, NASA-STD-8719.9 and EU Directives: 98/37/EC.



SPECIFICATION (Inches & Lbs.)	(WLL) Capacity from Vertical				A" Adjustment	B" Max	C" E"	F"		Weight Lbs.		
	@ 0°	@ 15°	@ 30°	@ 45°				Max	H"			
1t	BC-01	2,200	0	0	0	3.1 - 9.4	14.6	3.7	7.8	5.7	0.8	7.7
	BCD-01	2,200	1,800	1,500	1,100				8.6	7.8	1.7	9.0
2t	BC-02	4,400	0	0	0	3.1 - 9.4	14.6	4.0	7.8	5.7	0.8	9.9
	BCD-02	4,400	3,700	2,900	2,200				8.7	7.8	1.7	11.0
3t	BC-03	6,600	0	0	0	3.5 - 12.2	19.7	5.2	10.4	8.2	0.9	20.9
	BCD-03	6,600	5,500	4,400	3,300				10.2	11.0	2.4	22.4
5t	BC-05	11,000	0	0	0	3.5 - 12.2	19.7	5.6	10.4	8.2	0.9	24.2
	BCD-05	11,000	9,100	7,300	5,500				10.2	11.0	2.4	26.2
10t	BC-10	22,000	0	0	0	3.5 - 12.6	20.5	7.1	11.2	8.7	1.5	35.2
	BCD-10	22,000	18,300	14,500	11,000				12.0	13.0	3.6	40.5

# ZINC PLATED



# GRADE 80 LOAD CHAIN

(Made in Japan or Europe)

**USA LOAD CHAIN NOW ALSO AVAILABLE CONTACT US AT 877-543-8264 FOR MORE INFORMATION**

## CHAIN SPECIFICATIONS and DIMENSIONS (inches & pounds unless noted)

(in.) Dia x Pitch mm	Pitch in.	Working Load Limit (WLL) lbs	Bulk Length	Weight Lbs/Ft	AMH PART NO.	Models used on
(0.157") 4 x 12 mm	0.472	1100	328 Ft	0.25	C4X12Z	L, M, ML & MM003
(0.197") 5 x 15 mm	0.591	1750	328 Ft	0.36	C5X15Z	L, M, MA & ML005
(0.236") 6 x 18 mm	0.709	2540	328 Ft	0.54	C6X18Z	L, LA008-010, M & MA010
(0.276") 7.1 x 21 mm	0.827	3550	328 Ft	0.74	C7X21Z	L, LA, M & MA015
(0.315") 8 x 24 mm	0.945	4500	328 Ft	0.92	C8X24Z	L, LA, M & MA020
(0.354") 9 x 27 mm	1.063	5720	328 Ft	1.25	C9X27Z	LA025, M & MA050-250
(0.394") 10 x 28 mm	1.102	7050	328 Ft	1.5	C10X28Z	LA032-063-090, M & MA030, MA300
(0.394") 10 x 30 mm	1.181	7050	328 Ft	1.48	C10X30Z	L030-060-090
(0.197") 5 x 23.7 mm	0.933	Zinc Plated Hand Chain		0.19	C5X24Z	MA, M & Trolley Hand Chain
(0.106") 2.7 x 14.5 mm	0.571	Zinc Plated Hand Chain		0.10	C3X15Z	MM003 Hand Chain

We can supply quality replacement chains in bulk for most brands of hoists.

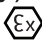


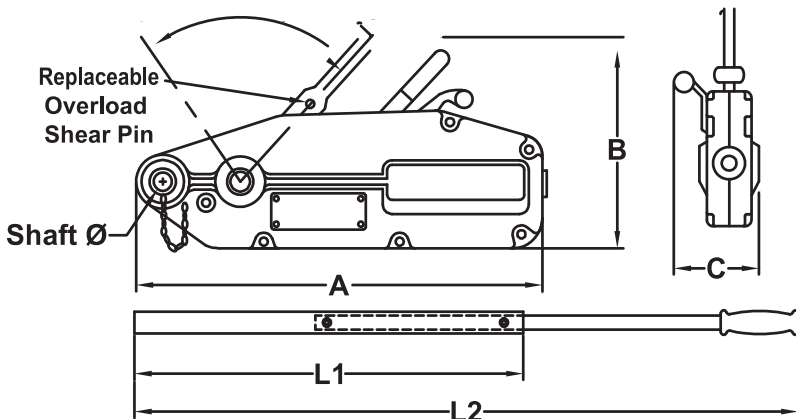
# Walk-e-Dog 2000, 4000 & 8000 Lb WLL

## Long Pull Wire Rope Grip Hoist

### FEATURES

The ability to pull or lift large loads over long distance with any length of wire rope

- Portable lightweight aluminum construction is durable and resist corrosion.
- ANY length of 6x19S class IWRC wire rope with seale construction having a Min. breaking strength 4 times the capacity can be used.  
(Some codes like EU Directives for Europe may require Min. breaking strength that is 5 times capacity (Reference AMH Bulletin SB022))
- Smooth operation with precise control.
- Telescoping handle allows the operator to optimize pull and stroke.
- Long service life and low maintenance requiring only periodic cleaning, lubrication and inspection.
- Overload protection is provided by a shear pin that is easily replaced. 4 extra shear pins are supplied in the lever grip or carrying handle compartments.
- Meets ASME/ANSI B30.21, OSHA, NASA-STD-8719.9 (as they apply) for manually lifting with a 4:1 SF.  
ATEX rated Ex  II 3 GD IIB 54o C X for limited use in Hazardous Environment  
66 Ft. wire rope and rear hook assemblies may be ordered separately.



**6X19S Wire Rope Assembly  
(Must be ordered separately)**

Part #	Size	Weight	Length
WD05RA66	5/16"	15 Lbs	66 Ft
WD07RA66	7/16"	28 Lbs	66 Ft
WD10RA66	5/8"	41 Lbs	66 Ft

Part #	Size	Weight	Length
WD05RA66	5/16"	15 Lbs	66 Ft
WD07RA66	7/16"	28 Lbs	66 Ft
WD10RA66	5/8"	41 Lbs	66 Ft



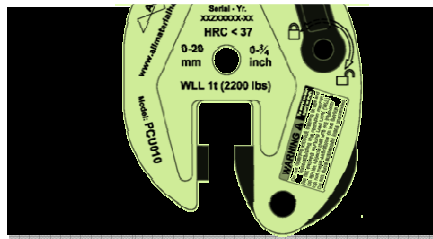
Telescoping handle optimizes pull and stroke

Walk-e-Dog Model	Wire Rope	ANSI/ASME B30.21, OSHA & NASA WLL @ 4:1 SF	Weight Lbs.	A	B	C	Shaft Ø	L1	L2	Advance /Stroke	Hand Pull @ WLL	
WD05	5/16"	2000 lbs	1T	13.2"	17.4"	9.6"	2.6"	0.88"	---	32.7"	2.1"	88 lb
WD07	7/16"	4000 lbs	2T	24.2"	22.2"	11.4"	4.0"	1.00"	32.7"	49.0"	2.3"	113 lb
WD10	5/8"	8000 lbs	4T	48.4"	26.9"	13.3"	4.7"	1.20"	32.7"	49.0"	1.1"	113 lb



# LIFTING ACCESSORIES





**PUCA** **CE**  
**Series**

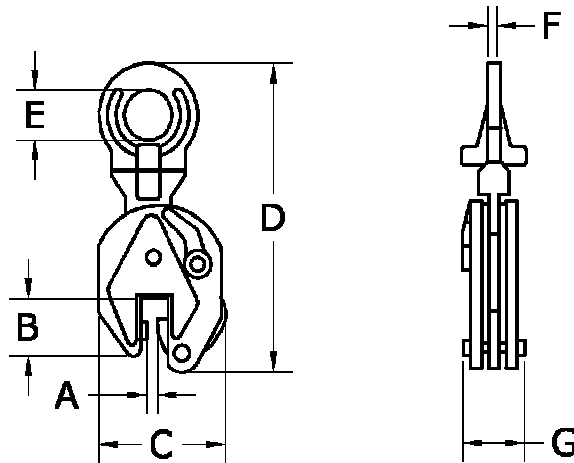
# Universal Plate Lifting Clamp

## 1/2 to 5 Metric tonne capacity



### FEATURES

- All steel body for durable strength in a smaller size
- Individually serialized and tested to 2 x WLL. Factory test certification of proof load is included.
- For use with materials having surface hardness < HBC 37
- 180° turning range for easy positioning or transfer of plates
- Lever insures pre-tensioning and release of grip jaws
- Replacement parts kits are available.
- Meets: EU Directives: 2006/42/EC and ASME B30.20



#### PCUA SERIES SPECIFICATIONS and DIMENSIONS (mm)

Model#	WLL Metric tonne	Weight (kg.)	Plate Size A	B	C	D	E	F	G
PCUA005	0.5t	2	0-15	43	106	216	30	10	50
PCUA010	1.0t	4.5	0-20	63	145	292	48	12	66
PCUA020	2.0t	7.3	0-25	78	174	369	68	16	76
PCUA030	3.0t	15	0-30	85	207	428	74	20	102
PCUA050	5.0t	21.6	0-50	100	240	481	80	24	110

#### PCUA SERIES SPECIFICATIONS and DIMENSIONS (inches)

Model#	WLL Metric tonne	Weight (lbs)	Plate Size A	B	C	D	E	F	G
PCUA005	0.5t	4.4	0-5/8	1.7	4.2	8.5	1.2	0.4	2.0
PCUA010	1.0t	9.9	0-3/4	2.5	5.7	11.5	1.9	0.5	2.6
PCUA020	2.0t	16.1	0-1	3.1	6.9	14.5	2.7	0.6	3.0
PCUA030	3.0t	33.0	0-1 1/8	3.3	8.1	16.9	2.9	0.8	4.0
PCUA050	5.0t	47.5	0-2	3.9	9.4	18.9	3.1	0.9	4.3

# ENLARGED WELDED MASTER LINKS + SUB-ASSEMBLIES -POWDER COATED FINISH

INSIDE WIDTH DIMENSIONS ARE OVER SIZED TO ACCEPT LARGE CRANE HOOKS

## GRADE 100

### WELDED MASTER LINKS

Part #	Trade Size	WLL 4:1 (lbs)	WLL 5:1 (lbs)	Weight (lbs)	Inside Dimensions (in)			Chain Size	
					i-length	i-width	dia	1 leg	2 leg
AX13	1/2	6,000	4,800	0.75	4.33	2.36	0.51	9/32" + 5/16"	7/32"
AX16W	5/8	8,600	6,880	1.47	5.51	3.15	0.63	5/16"	9/32"
AX18W	3/4 (11/16)	12,900	10,320	2.02	5.91	3.54	0.71	3/8"	5/16"
AX22	7/8	17,600	14,080	3.30	6.30	3.54	0.87	1/2"	3/8"
AX26	1	30,000	24,000	5.06	7.09	3.94	1.02	5/8"	1/2"
AX32	1-1/4	39,100	31,280	8.58	7.87	4.33	1.26	3/4"	5/8"
AX36	1-1/2	61,100	48,880	13.97	10.24	5.51	1.42	7/8"	3/4"
AX45	1-3/4	74,000	59,200	28.16	13.39	7.09	1.77	1"	7/8"
AX51	2	103,400	82,720	37.84	13.78	7.48	2.01	1 1/4"	1"
AX57	2-1/4	178,900	143,120	53.24	15.75	7.87	2.24	-----	1 1/4"



raised letter stamping



### WELDED MASTER LINK ASSEMBLIES

Part #	Trade Size	WLL 4:1 (lbs)	WLL 5:1 (lbs)	Weight (lbs)	Inside Dim. Masters (in)			Inside Dim. Subs (in)			For Chain
					i-length	i-width	dia	i-length	i-width	dia	
AKX1813W	3/4 (11/16)	11,200	8,960	2.90	5.91	3.54	0.71	2.13	0.98	0.51	9/32"
AKX2216	7/8	15,200	12,160	4.88	6.30	3.54	0.87	2.76	1.34	0.63	9/32" + 5/16"
AKX2618	1	26,000	20,800	7.39	7.09	3.94	1.02	3.35	1.57	0.71	3/8"
AKX3222	1-1/4	39,000	31,200	13.24	7.87	4.33	1.26	4.53	1.97	0.87	1/2"
AKX3626	1-1/2	58,700	46,960	21.98	10.24	5.51	1.42	5.51	2.56	1.02	5/8"
AKX5132	2	91,700	73,360	51.26	13.78	7.48	2.01	5.91	2.76	1.26	3/4"
AKX5136	2	110,900	88,720	56.76	13.78	7.48	2.01	6.69	2.95	1.42	7/8"
AKX5740	2-1/4	155,100	124,080	77.44	15.75	7.87	2.24	6.69	3.15	1.57	1"



### WELDED MASTER LINK ASSEMBLIES WITH EXTRA LARGE SUB-LINKS

Part #	Trade Size	WLL 4:1 (lbs)	WLL 5:1 (lbs)	Weight (lbs)	Inside Dim. Masters (in)			Inside Dim. Subs (in)			For Chain
					i-length	i-width	dia	i-length	i-width	dia	
AWX1813	3/4 (11/16)	11,200	8,960	3.52	5.91	3.54	0.71	4.33	2.36	0.51	9/32"
AWX2216	7/8	15,200	12,160	5.63	6.30	3.54	0.87	4.33	2.36	0.63	9/32" + 5/16"
AWX2618	1	26,000	20,800	8.58	7.09	3.94	1.02	5.31	2.95	0.71	3/8"
AWX3222	1-1/4	39,000	31,200	15.18	7.87	4.33	1.26	6.30	3.55	0.87	1/2"
AWX3626	1-1/2	58,700	46,960	24.09	10.24	5.51	1.42	7.09	3.94	1.02	5/8"



### WELDED MASTER LINK ASSEMBLIES FOR LARGE CRANE HOOKS WITH LARGE SUB-LINKS

Part #	For Chain Size	WLL (lbs), 4:1 SF			Weight (lbs)	Inside Dim. Masters (in)			Inside Dim. Subs (in)		
		1 leg 90°	2 leg 60°	3+4 leg 60°		i-length	i-width	dia	i-length	i-width	dia
AWXO3016	9/32 - 5/16	5,700	9,900	14,800	14.37	13.40	7.10	1.18	4.33	2.36	0.63
AWXO3018	3/8	8,800	15,200	22,900	15.55	13.40	7.10	1.18	5.31	2.95	0.71
AWXO4022	1/2	15,000	26,000	39,000	28.60	13.40	7.10	1.57	6.30	3.54	0.87
AWXO4026	5/8	22,600	39,100	58,700	32.10	13.40	7.10	1.57	7.09	3.94	1.02



### WELDED MASTER LINKS

Part #	Trade Size	WLL 4:1 (lbs)	WLL 5:1 (lbs)	Weight (lbs)	Inside Dimensions (in)			Suited for:	
					i-length	i-width	dia	1 leg	2 leg
A13	1/2	5,000	4,000	0.75	4.33	2.36	0.51	9/32" + 5/16"	7/32"
A16W	5/8	7,100	5,680	1.47	5.51	3.15	0.63	5/16"	9/32"
A18W	3/4 (11/16)	10,500	8,400	2.02	5.91	3.54	0.71	3/8"	5/16"
A22	7/8	15,900	12,720	3.30	6.30	3.54	0.87	1/2"	3/8"
A26	1	24,000	19,200	5.06	7.09	3.94	1.02	5/8"	1/2"
A32	1-1/4	36,000	28,800	8.58	7.87	4.33	1.26	3/4"	5/8"
A36	1-1/2	49,000	39,200	13.97	10.24	5.51	1.42	7/8"	3/4"
A40	1-5/8	59,200	47,360	19.80	11.81	6.30	1.57	1"	7/8"



raised letter stamping



### WELDED MASTER LINK ASSEMBLIES

Part #	Trade Size	WLL 4:1 (lbs)	WLL 5:1 (lbs)	Weight (lbs)	Inside Dim. Masters (in)			Inside Dim. Subs (in)			For Chain
					i-length	i-width	dia	i-length	i-width	dia	
AK1813W	3/4 (11/16)	9,100	7,280	2.90	5.91	3.54	0.71	2.13	0.98	0.51	9/32"
AK2216	7/8	13,800	11,040	4.88	6.30	3.54	0.87	2.76	1.34	0.63	9/32" + 5/16"
AK2618	1	20,800	16,640	7.39	7.09	3.94	1.02	3.35	1.57	0.71	3/8"
AK3222	1-1/4	31,200	24,960	13.24	7.87	4.33	1.26	4.53	1.97	0.87	1/2"
AK3626	1-1/2	47,000	37,600	21.98	10.24	5.51	1.57	5.51	2.56	1.02	5/8"



Never exceed work load limit. Always follow your domestic safety regulations.

## CONNECTING LINK

For Chain Size	Part #	Dimensions (in)							Weight (lbs)	WLL (lbs)
		A	C	O	R	P	S			
7/32	CLX06	0.55	0.71	0.71	1.77	0.31	0.30	0.15	3,000	
9/32	CLX07	0.63	0.79	0.75	2.05	0.41	0.35	0.31	4,300	
5/16	CLX08	0.71	0.98	0.91	2.44	0.47	0.37	0.44	5,700	
3/8	CLX10	0.91	1.18	1.06	2.76	0.47	0.47	0.77	8,800	
1/2	CLX13	1.06	1.54	1.34	3.54	0.79	0.67	1.63	15,000	
5/8	CLX16	1.30	1.57	1.54	4.13	0.87	0.81	2.56	22,600	
3/4	CLX20	1.65	1.81	1.81	4.45	1.14	0.98	4.52	35,300	
7/8	CLX22	1.93	2.17	2.28	5.24	1.18	1.10	6.83	42,700	
1	CLX26	2.24	3.35	3.25	7.56	1.57	1.18	14.99	59,700	

## CLEVIS SLING HOOK WITH FORGED LATCH

For Chain Size	Part #	Dimensions (in)									Weight (lbs)	WLL (lbs)
		A	A1	B	C	G	H	R	PxL			
7/32	CBX06SF	1.02	0.75	0.28	0.31	0.59	0.79	2.72	0.30x0.69	0.55	3,000	
9/32	CBX07SF	1.34	1.02	0.37	0.39	0.75	1.10	3.74	0.35x0.89	1.21	4,300	
5/16	CBX08SF	1.34	1.02	0.37	0.39	0.75	1.10	3.74	0.39x0.89	1.10	5,700	
3/8	CBX10SF	1.57	1.22	0.47	0.53	0.98	1.30	4.33	0.51x1.16	2.20	8,800	
1/2	CBX13SF	2.01	1.57	0.59	0.67	1.18	1.57	5.35	0.63x1.46	3.75	15,000	
5/8	CBX16SF	2.20	1.77	0.71	0.87	1.46	1.89	6.10	0.79x2.05	7.05	22,600	
3/4	CBX20SF	2.36	2.09	0.91	1.02	2.01	2.05	7.28	0.94x2.87	11.02	35,300	
7/8	CBX22SF	2.76	2.44	0.98	1.14	1.97	2.48	8.27	1.02x2.83	27.12	42,700	

## CLEVIS GRAB HOOK WITH SADDLE

For Chain Size	Part #	Dimensions (in)									Weight (lbs)	WLL (lbs)
		A	B	C	G	H	R	M	PxL			
7/32	CFX06	0.31	0.31	0.35	0.87	0.87	1.99	1.40	0.30x0.69	0.44	3,000	
9/32	CFX07	0.39	0.39	0.45	1.18	1.10	2.58	1.85	0.35x0.89	0.97	4,300	
5/16	CFX08	0.39	0.39	0.43	1.18	1.10	2.56	1.85	0.39x0.89	0.97	5,700	
3/8	CFX10	0.51	0.51	0.59	1.73	1.34	3.15	2.17	0.51x1.24	2.12	8,800	
1/2	CFX13	0.67	0.67	0.69	2.09	1.85	4.15	3.19	0.63x1.65	4.63	15,000	
5/8	CFX16	0.75	0.75	0.72	2.52	2.36	4.40	3.62	0.83x2.03	7.50	22,600	
3/4	CFX20	0.93	0.91	0.87	3.35	2.56	4.65	3.94	0.94x2.42	11.46	35,300	
7/8	CFX22	1.02	1.02	0.98	3.62	2.68	6.06	4.72	1.02x2.83	17.20	42,700	

## CLEVIS GRAB HOOK WITH SADDLE & LATCH

For Chain Size	Part #	Dimensions (in)									Weight (lbs)	WLL (lbs)
		A	B	C	G	H	R	M	PxL			
9/32	CFX07S	0.39	0.39	0.45	1.18	1.10	2.58	1.85	0.35x0.89	0.97	4,300	
5/16	CFX08S	0.39	0.39	0.43	1.18	1.10	2.56	1.85	0.39x0.89	0.97	5,700	
3/8	CFX10S	0.51	0.51	0.59	1.73	1.34	3.15	2.17	0.51x1.24	2.12	8,800	
1/2	CFX13S	0.67	0.67	0.69	2.09	1.85	4.15	3.19	0.63x1.65	4.63	15,000	
5/8	CFX16S	0.75	0.75	0.72	2.52	2.36	4.40	3.62	0.83x2.03	7.50	22,600	

## CLEVIS FOUNDRY HOOK

For Chain Size	Part #	Dimensions (in)								Weight (lbs)	WLL (lbs)
		A	B	C	G	H	R	PxL			
7/32	CYFX06	2.11	0.33	0.26	0.87	1.02	3.58	0.30x0.69	1.54	3,000	
9/32	CYFX07	2.52	0.39	0.45	1.02	1.22	4.74	0.35x0.89	2.43	4,300	
5/16	CYFX08	2.52	0.39	0.45	1.02	1.22	4.74	0.39x0.89	2.43	5,700	
3/8	CYFX10	2.99	0.51	0.59	1.18	1.34	5.16	0.51x1.24	3.75	8,800	
1/2	CYFX13	3.50	0.67	0.69	1.57	1.75	5.83	0.63x1.65	7.94	15,000	
5/8	CYFX16	3.98	0.75	0.85	1.77	1.99	7.81	0.83x2.03	12.35	22,600	

## CLEVIS SELF LOCKING HOOK

For Chain Size	Part #	Dimensions (in)									Weight (lbs)	WLL (lbs)
		A	B	C	G	H	R	T	PxL			
7/32	CRFX06	1.10	0.28	0.31	0.63	0.83	3.70	1.38	0.30x0.69	1.10	3,000	
9/32	CRFX07	1.34	0.35	0.39	0.79	1.02	4.84	1.69	0.35x0.89	2.09	4,300	
5/16	CRFX08	1.34	0.35	0.39	0.79	1.02	4.84	1.69	0.39x0.89	2.09	5,700	
3/8	CRFX10	1.77	0.47	0.55	0.98	1.18	5.63	2.20	0.51x1.24	3.53	8,800	
1/2	CRFX13	2.01	0.59	0.67	1.38	1.57	7.09	2.72	0.63x1.65	7.05	15,000	
5/8	CRFX16	2.36	0.75	0.75	1.42	1.97	8.46	3.15	0.83x2.03	13.23	22,600	
3/4	CRFX20	2.76	0.91	1.02	2.36	2.64	9.96	3.54	0.94x2.87	21.61	35,300	
7/8	CRFX22	3.23	1.02	1.26	2.44	2.76	11.30	3.94	1.02x2.83	31.75	42,700	

# ALLOY CHAIN FITTINGS

# GRADE 100

## EYE SLING HOOK WITH FORGED LATCH

For Chain Size	Part #	Dimensions (in)								Weight (lbs)	WLL (lbs)
		A	A1	D	G	H	O	R			
7/32	CAX06SF	1.02	0.75	0.39	0.63	0.79	0.81	3.19	0.55	3,000	
9/32-5/16	CAX08SF	1.30	1.02	0.43	0.75	1.14	0.98	3.98	1.10	5,700	
3/8	CAX10SF	1.57	1.22	0.63	1.02	1.30	1.34	5.16	2.14	8,800	
1/2	CAX13SF	2.01	1.57	0.75	1.30	1.65	1.69	6.26	4.19	15,000	
5/8	CAX16SF	2.20	1.77	0.96	1.57	1.97	1.97	7.20	7.28	22,600	
3/4	CAX20SF	2.36	2.05	1.06	1.89	2.09	2.17	7.99	9.92	35,300	
7/8	CAX22SF	2.76	2.44	1.14	1.97	2.36	2.36	8.82	15.65	42,700	
1	CAX26SF	3.03	2.87	1.38	2.36	2.95	2.76	10.12	26.46	59,700	

## EYE FOUNDRY HOOK

For Chain Size	Part #	Dimensions (in)						Weight (lbs)	WLL (lbs)
		A	D	G	H	O	R		
7/32	CYX06	2.11	0.45	0.87	1.02	0.59	4.04	1.34	3,000
9/32-5/16	CYX08	2.52	0.53	0.98	1.14	0.71	4.92	2.03	5,700
3/8	CYX10	2.99	0.55	0.91	1.18	1.26	5.91	3.90	8,800
1/2	CYX13	3.50	0.75	1.50	1.57	1.06	6.81	6.22	15,000
5/8	CYX16	4.02	0.94	1.77	1.89	1.85	8.27	11.09	22,600
3/4	CYX20	4.49	1.10	2.13	2.36	2.20	10.24	16.75	35,300

## EYE SELF LOCKING HOOK

For Chain Size	Part #	Dimensions (in)								Weight (lbs)	WLL (lbs)
		A	D	G	H	O	R	T			
7/32	CROX06	1.10	0.43	0.63	0.83	0.83	4.29	1.38	1.10	3,000	
9/32-5/16	CROX08	1.34	0.47	0.79	1.02	0.98	5.31	1.69	2.12	5,700	
3/8	CROX10	1.77	0.63	0.98	1.18	1.30	6.61	2.20	3.64	8,800	
1/2	CROX13	2.01	0.79	1.38	1.57	1.57	8.07	2.72	7.16	15,000	
5/8	CROX16	2.36	1.06	1.42	1.97	1.97	9.88	3.15	13.45	22,600	
3/4	CROX20	2.76	1.18	2.36	2.64	2.36	11.42	3.54	21.61	35,300	
7/8	CROX22	3.15	1.26	2.44	2.76	2.76	12.68	3.94	31.75	42,700	

## EYE GRAB HOOK WITH SADDLE

For Chain Size	Part #	Dimensions (in)								Weight (lbs)	WLL (lbs)
		A	D	G	H	O	R	M			
7/32	CDX06	0.31	0.33	0.87	0.87	0.47	2.03	1.40	0.40	3,000	
9/32-5/16	CDX08	0.39	0.43	1.18	1.10	0.67	2.72	1.85	0.88	5,700	
3/8	CDX10	0.51	0.59	1.73	1.34	0.87	3.41	2.17	1.94	8,800	
1/2	CDX13	0.67	0.71	2.09	1.85	1.02	4.35	3.19	4.30	15,000	
5/8	CDX16	0.75	0.83	2.52	2.36	1.26	5.08	3.62	7.05	22,600	
3/4	CDX20	0.93	0.91	3.35	2.52	1.50	6.02	3.94	10.80	35,300	
7/8	CDX22	1.02	1.02	3.62	2.56	1.61	7.09	4.76	16.53	42,700	
1	CDX26	1.20	1.42	3.94	3.54	2.17	8.39	5.00	28.66	59,700	

## SWIVEL SELF LOCKING HOOK

For Chain Size	Part #	Dimensions (in)							Weight (lbs)	WLL (lbs)
		A	B	O	D	G	H	R		
7/32	CRGX06	1.10	0.91	1.42	0.51	0.63	0.83	6.22	1.32	3,000
9/32-5/16	CRGX08	1.34	1.06	1.42	0.51	0.79	1.02	7.17	2.43	5,700
3/8	CRGX10	1.77	1.38	1.65	0.63	0.98	1.18	8.54	4.41	8,800
1/2	CRGX13	2.13	1.69	1.97	0.83	1.38	1.57	10.67	8.82	15,000
5/8	CRGX16	2.44	2.28	2.44	0.94	1.50	1.97	12.60	14.99	22,600

## SHORTENING CLUTCH

For Chain Size	Part #	Dimensions (in)									Weight (lbs)	WLL (lbs)
		A	B	C	D	E	F	G	PxL			
7/32	CXX06	0.31	0.31	0.39	0.31	0.75	1.77	0.91	0.30x0.69	0.46	3,000	
9/32	CXX07	0.37	0.37	0.39	0.37	0.93	2.20	1.14	0.35x0.89	1.06	4,300	
5/16	CXX08	0.37	0.37	0.39	0.37	0.93	2.20	1.14	0.39x0.89	1.06	5,700	
3/8	CXX10	0.47	0.47	0.57	0.47	1.28	3.07	1.42	0.51x1.24	2.47	8,800	
1/2	CXX13	0.61	0.61	0.71	0.61	1.73	3.54	1.38	0.63x1.65	4.03	15,000	
5/8	CXX16	0.75	0.83	0.83	0.75	1.97	4.17	1.50	0.83x2.03	6.24	22,600	

Never exceed work load limit. Always follow your domestic safety regulations.

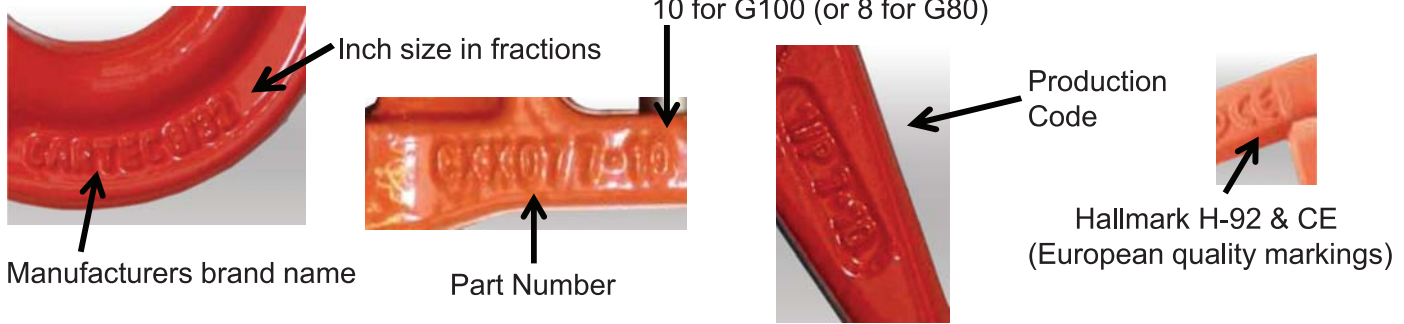
# ALLOY CHAIN FITTINGS

# GRADE 100

## CLEVIS SHORTENING CLUTCH

For Chain Size	Part #	Dimensions (in)											Weight (lbs)	WLL (lbs)
		A	B	C	D	E	F	G	H	I	M	PxL		
9/32	CXXL07S	0.37	0.37	0.39	0.37	0.93	2.20	1.14	6.22	0.33	1.75	0.35x1.34	1.81	4,300
5/16	CXXL08S	0.37	0.37	0.39	0.37	0.93	2.20	1.14	6.46	0.39	1.97	0.39x1.34	1.87	5,700
3/8	CXXL10S	0.47	0.47	0.57	0.47	1.28	3.07	1.42	7.60	0.49	2.38	0.51x1.54	3.55	8,800
1/2	CXXL13S	0.61	0.61	0.71	0.61	1.73	3.54	1.38	9.82	0.63	2.99	0.63x2.09	7.21	15,000
5/8	CXXL16S	0.75	0.83	0.83	0.75	1.97	4.17	1.50	11.93	0.79	3.82	0.83x2.76	12.68	22,600

### Hook Markings:



# ALLOY CHAIN FITTINGS

# GRADE 80

## CONNECTING LINK

For Chain Size	Part #	Dimensions (in)							Weight (lbs)	WLL (lbs)
		A	C	O	R	P	S			
7/32	CL06	0.63	0.71	0.65	1.69	0.28	0.27	0.15	2,500	
9/32	CL07	0.73	0.79	0.79	1.93	0.33	0.30	0.22	3,500	
5/16	CL08	0.89	1.02	0.98	2.76	0.37	0.35	0.55	4,500	
3/8	CL10	0.98	1.26	1.06	3.03	0.47	0.43	0.77	7,100	
1/2	CL13	1.18	1.38	1.26	3.35	0.61	0.61	1.50	12,000	
5/8	CL16	1.30	1.57	1.54	4.06	0.83	0.83	2.43	18,100	
3/4	CL20	1.73	1.89	1.85	4.57	0.91	0.91	3.75	28,300	
7/8	CL22	1.93	2.01	2.17	5.24	1.04	1.04	4.85	34,200	
1	CL26	2.36	2.36	2.60	5.83	1.24	1.24	9.26	47,700	
1-1/4	CL32	3.15	3.03	3.39	7.48	1.57	1.26	15.85	72,300	

## CLEVIS SLING HOOK WITH FORGED LATCH

For Chain Size	Part #	Dimensions (in)									Weight (lbs)	WLL (lbs)
		A	A1	B	C	G	H	P	R			
7/32	CB06SF	0.98	0.75	0.26	0.33	0.57	0.79	0.28	2.87	0.53	2,500	
9/32-5/16	CB08SF	1.16	0.96	0.34	0.39	0.75	1.06	0.35	3.40	1.17	4,500	
3/8	CB10SF	1.41	1.14	0.48	0.53	0.93	1.30	0.51	4.13	2.09	7,100	
1/2	CB13SF	1.71	1.38	0.60	0.67	1.12	1.57	0.63	5.06	3.68	12,000	
5/8	CB16SF	2.20	1.77	0.71	0.87	1.46	1.89	0.79	6.10	6.61	18,100	
3/4	CB20SF	2.40	2.09	0.91	1.02	2.01	2.05	0.94	7.20	12.57	28,300	
7/8	CB22SF	2.83	2.44	0.96	1.14	1.97	2.44	1.06	8.39	19.40	34,200	

## CLEVIS GRAB HOOK WITH SADDLE

For Chain Size	Part #	Dimensions (in)							Weight (lbs)	WLL (lbs)
		A	B	C	G	H	R	PxL		
9/32-5/16	CF08	0.39	0.35	0.39	1.18	0.94	1.97	0.35x0.89	0.60	4,500
3/8	CF10	0.51	0.51	0.55	1.73	1.22	2.83	0.51x1.24	1.65	7,100
1/2	CF13	0.67	0.67	0.67	2.09	1.50	3.46	0.63x1.65	2.98	12,000
5/8	CF16	0.79	0.83	0.79	2.52	2.36	4.37	0.83x2.03	6.17	18,100
3/4	CF20	0.94	0.94	0.94	3.35	2.56	5.12	0.94x2.42	10.58	28,300
7/8	CF22	1.02	1.02	1.02	3.43	2.68	5.47	1.02x2.83	12.46	34,200

# ALLOY CHAIN FITTINGS

# GRADE 80

## CLEVIS SELF LOCKING HOOK

For Chain Size	Part #	Dimensions (in)									Weight (lbs)	WLL (lbs)
		A	B	C	G	H	R	T	PxL			
7/32	CRF06	1.10	0.28	0.31	0.63	0.83	3.70	1.38	0.30x0.69	1.09	2,500	
9/32-5/16	CRF08	1.34	0.35	0.39	0.79	1.02	4.84	1.69	0.35x0.89	2.06	4,500	
3/8	CRF10	1.77	0.47	0.55	0.98	1.18	5.63	2.20	0.51x1.24	3.48	7,100	
1/2	CRF13	2.01	0.59	0.67	1.38	1.57	7.09	2.72	0.63x1.65	7.05	12,000	
5/8	CRF16	2.36	0.75	0.75	1.42	1.97	8.46	3.15	0.83x2.03	13.12	18,100	

## EYE FOUNDRY HOOK

For Chain Size	Part #	Dimensions (in)							Weight (lbs)	WLL (lbs)
		A	D	G	H	O	R			
9/32-5/16	CY08	2.52	0.53	0.98	1.14	0.71	4.92	2.03	4,500	
3/8	CY10	2.99	0.55	0.91	1.18	1.26	5.91	3.89	7,100	
1/2	CY13	3.50	0.75	1.50	1.57	1.06	6.81	6.22	12,000	
5/8	CY16	4.02	0.94	1.77	1.89	1.85	8.27	11.09	18,100	

## EYE SLING HOOK WITH FORGED LATCH

For Chain Size	Part #	Dimensions (in)									Weight (lbs)	WLL (lbs)
		A	A2	D	G	H	O	R				
7/32	CA06SF	0.98	0.81	0.33	0.57	0.79	0.81	3.17	0.60	2,500		
9/32-5/16	CA08SF	1.16	0.96	0.43	0.75	1.06	0.98	3.76	1.10	4,500		
3/8	CA10SF	1.41	1.14	0.55	0.93	1.30	1.34	4.74	1.98	7,100		
1/2	CA13SF	1.71	1.39	0.69	1.14	1.57	1.67	5.90	3.31	12,000		
5/8	CA16SF	2.07	1.73	0.87	1.40	1.93	2.05	7.20	6.06	18,100		
3/4	CA20SF	2.36	2.05	1.06	1.89	2.09	2.17	7.99	9.92	28,300		
7/8	CA22SF	2.76	2.44	1.18	2.03	2.36	2.36	8.82	15.65	34,200		

## EYE SELF LOCKING HOOK

For Chain Size	Part #	Dimensions (in)									Weight (lbs)	WLL (lbs)
		A	D	G	H	O	R	T				
7/32	CRO06	1.10	0.43	0.63	0.83	0.83	4.29	1.38	1.12	2,500		
9/32-5/16	CRO08	1.34	0.47	0.79	1.02	0.98	5.31	1.69	2.06	4,500		
3/8	CRO10	1.77	0.63	0.98	1.18	1.30	6.61	2.20	3.58	7,100		
1/2	CRO13	2.01	0.79	1.38	1.57	1.57	8.07	2.72	7.16	12,000		
5/8	CRO16	2.36	1.06	1.42	1.97	1.97	9.88	3.15	13.34	18,100		

## EYE GRAB HOOK WITH SADDLE

For Chain Size	Part #	Dimensions (in)							Weight (lbs)	WLL (lbs)
		A	D	G	H	O	R			
9/32-5/16	CD08	1.10	0.39	1.18	0.94	0.63	2.36	0.51	4,500	
3/8	CD10	0.51	0.43	1.73	1.22	0.83	3.15	1.30	7,100	
1/2	CD13	0.67	0.63	2.09	1.50	1.02	4.09	2.73	12,000	
5/8	CD16	0.79	0.75	2.52	2.36	1.18	5.08	5.73	18,100	
3/4	CD20	0.91	0.87	3.35	2.56	1.42	6.02	9.26	28,300	
7/8	CD22	1.06	0.98	3.43	2.68	1.50	7.09	11.79	34,200	

## WEBBING COUPLING LINK

For Chain Size	Part #	Dimensions (in)										Weight (lbs)	WLL (lbs)
		A	B	C	D	E	F	G	H	I			
9/32-5/16	CLS08	1.57	2.28	0.94	0.79	0.94	0.55	0.67	0.35	0.39	0.62	4,500	
3/8	CLS10	1.57	3.19	1.38	1.18	1.18	0.55	0.91	0.43	0.51	1.04	7,100	
1/2	CLS13	2.17	4.09	1.89	1.42	1.42	0.71	1.10	0.63	0.63	2.18	12,000	

## SHORTENING HOOK

For Chain Size	Part #	Dimensions (in)									Weight (lbs)	WLL (lbs)
		A	B	C	D	E	F	PxL				
7/32	CX06	0.31	0.31	0.39	0.31	0.75	1.77	0.30x0.69	0.46	2,500		
9/32	CX07	0.37	0.37	0.39	0.37	0.93	2.20	0.35x0.89	1.06	3,500		
5/16	CX08	0.37	0.37	0.39	0.37	0.93	2.20	0.39x0.89	1.06	4,500		
3/8	CX10	0.47	0.47	0.57	0.47	1.28	3.07	0.51x1.24	2.47	7,100		
1/2	CX13	0.61	0.61	0.71	0.61	1.73	3.54	0.63x1.65	4.03	12,000		
5/8	CX16	0.75	0.83	0.83	0.75	1.97	4.17	0.83x2.03	6.24	18,100		

Never exceed work load limit. Always follow your domestic safety regulations.

# BUILD YOUR CHAIN SLING

## Crane Attachments:



Grade 80 Master Links 1/2" up to 1-5/8"

Grade 100 Master links 1/2" up to 2-1/4"



Grade 80 Sub-Assemblies 3/4" upto 1-1/2"

Grade 100 Sub-Assemblies 3/4" up to 2-1/4"

## Connecting Links:



Grade 80 Connecting Links 7/32" up to 1-1/4"

Grade 100 Connecting Links 7/32" up to 1"

## Chain Shorteners:



Grade 80 Eye Grab Hooks 9/32" up to 7/8"

Grade 100 Eye Grab Hooks 7/32" up to 1"



Grade 80 Clevis Grab Hooks 9/32" up to 7/8"

Grade 100 Clevis Grab Hooks 7/32" up to 7/8"



Grade 80 Shortening Clutch 7/32" up to 5/8"

Grade 100 Shortening Clutch 7/32" up to 5/8"



Grade 100 Clevis Shortening Clutch  
9/32" up to 5/8"

## Bottom Hooks:



Grade 80:

CA  
7/32" - 7/8"

CRF  
7/32" - 5/8"

CT  
9/32"-1/2"

CB  
7/32" - 7/8"

N/A

CRO  
7/32" - 5/8"

CY  
9/32" - 5/8"

N/A

Grade 100:

CAX  
7/32" - 1"

CRFX  
7/32" - 7/8"

N/A

CBX  
7/32" - 7/8"

CRGX  
7/32" - 5/8"

CROX  
7/32" - 7/8"

CYX  
7/32" - 3/4"

CYFX  
7/32" - 5/8"



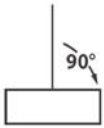
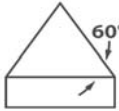
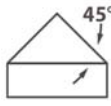
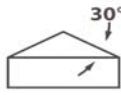
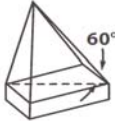
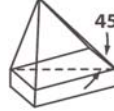
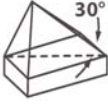
Grade 80 Choker Hook  
9/32" - 1/2"

Grade 80 Webbing  
Coupling Link  
9/32" - 1/2"

Grade 100 Clevis & Eye Grab Hooks with Latch 7/32" – 5/8"  
**(Most commonly used for tie downs or to reduce risk of basket hitch falling apart after load is released)**



# MAXIMUM WORK LOAD OF VARIOUS LIFTING CHAIN SLING CONFIGURATIONS

Design Factor	Single Leg Sling	Double Leg Sling				Triple & Quad Leg Sling		
<b>4:1</b>								
<b>Angle</b>	90°	60°	45°	30°	60°	45°	30°	
<b>Load Factor</b>	1	1.7	1.4	1	2.6	2.1	1.5	
Chain Size		Work Load (lbs)						
inch	mm	<u>Grade 100</u>						
7/32"	6	2,700	4,700	3,800	2,700	7,000	5,700	4,000
9/32"	7	4,300	7,400	6,100	4,300	11,200	9,100	6,400
5/16"	8	5,700	9,900	8,100	5,700	14,800	12,100	8,500
3/8"	10	8,800	15,200	12,400	8,800	22,900	18,700	13,200
1/2"	13	15,000	26,000	21,200	15,000	39,000	31,800	22,500
5/8"	16	22,600	39,100	32,000	22,600	58,700	47,900	33,900
3/4"	20	35,300	61,100	49,900	35,300	91,700	74,900	53,000
7/8"	22	42,700	74,000	60,400	42,700	110,900	90,600	64,000
1"	26	59,700	103,400	84,400	59,700	155,100	126,600	89,550
<b>Temperature Resistance:</b>		Retains 100% of work load limit at minus 40° to 400° F Not for temperatures over 400° F						
Chain Size		Work Load (lbs)						
inch	mm	<u>Grade 80</u>						
7/32"	6	2,100	3,600	3,000	2,100	5,500	4,400	3,200
9/32"	7	3,500	6,100	4,900	3,500	9,100	7,400	5,200
5/16"	8	4,500	7,800	6,400	4,500	11,700	9,500	6,800
3/8"	10	7,100	12,300	10,000	7,100	18,400	15,100	10,600
1/2"	13	12,000	20,800	17,000	12,000	31,200	25,500	18,000
5/8"	16	18,100	31,300	25,600	18,100	47,000	38,400	27,100
3/4"	20	28,300	49,000	40,000	28,300	73,500	60,000	42,400
7/8"	22	34,200	59,200	48,400	34,200	88,900	72,500	51,300
1"	26	47,700	82,600	67,400	47,700	123,900	101,200	71,500
1 1/4"	32	72,300	125,200	102,200	72,300	187,800	153,400	108,400
<b>Temperature Resistance:</b>		Retains 100% of work load limit at minus 40° to 400° F, 90% at 400° to 570° F, and 75% at 570° to 750° F Not for temperatures over 750° F						



# HOIST RINGS

- Other metric and imperial thread dimensions are available

## SWIVEL EYE BOLT WITH RING, Grade 100 / Grade 80

Part #	Rated Load (metric tons)	Metric Thread (DxL)	Dimensions (mm)							Weight (kg)
			A	B	C	E	H	SW	D1	
<b>Grade 100</b>										
C800X0141620	1.4	M16X20	30	13	46	50	105	30	38	0.53
C800X0252030	2.5	M20X30	34	16	57	61	131	40	50	1.05
C800X0402430	4	M24X30	40	19	70	68	153	48	58	1.63
C800X0673654	6.7	M36X54	40	20	65	80	165	65	75	2.23
<b>Grade 80</b>										
C8000031018	0.3	M10X18	30	13	46	50	105	30	38	0.48
C8000051218	0.5	M12X18	30	13	46	50	105	30	38	0.50
C8000101620	1.12	M16X20	30	13	46	50	105	30	38	0.53
C8000202030	2	M20X30	34	16	57	61	131	40	50	1.05
C8000302430	3.15	M24X30	40	19	70	68	153	48	58	1.63
C8000503035	5.3	M30X35	40	20	65	80	165	65	75	2.23
C8000803654	8	M36X54	50	22	90	95	205	75	85	5.50
C8001004263	10	M42X63	50	22	90	95	205	75	85	10.00
C8001505678	15	M56X78	70	30	120	130	280	95	120	10.00

## SWIVEL EYE BOLT WITH BRACKET, Grade 100

Part #	Rated Load (metric tons)	Metric Thread (MxL)	Dimensions (mm)													Weight (kg)
			A	B	C	D	E	F	G	H	I	W	J	K	CH	
C806X08	0.3	M8X15	57	34	10	78	24	41	30	26.5	25	43	51	35	13	0.28
C806X10	0.63	M10X15	57	34	10	78	24	41	30	26.5	25	42	51	35	17	0.29
C806X12	1	M12X23	66	38	13.5	85	30	50	36	33	32	40	52	28	19	0.50
C806X16	1.5	M16X24	66	38	13.5	85	30	50	36	33	32	38	52	28	24	0.51
C806X20	2.5	M20X31	87	55	16	111	48	68	44	42.5	45	54	71	36	30	1.25
C806X24	4	M24X37	87	55	16	111	48	68	44	42.5	45	51	71	36	36	1.30
C806X30	5	M30X45	109	66	22.5	145	54	91	65	58.5	60	62	86	47	46	3.25
C806X36	8	M36X59	136	78	28	190	62	108	81	72.5	70	88	115	74	55	5.90
C806X42	15	M42X61	169	97	36	242	68	131	89	87.5	85	121	151	97	65	11.20
C806X48	20	M48X71	169	97	36	242	68	131	89	87.5	95	117	151	93	75	11.60

## SWIVEL EYE BOLT WITH KEY, Grade 100

Part #	Rated Load (metric tons)	Metric Thread (MxL)	Dimensions (mm)						Weight (kg)
			A	B	C	D	E	K	
turns 360° can be loaded in any direction									
C807XC10	0.4	M10X16	44.5	8	10	29	32	45	0.30
C807XC12	0.75	M12X18	53.5	11	11	34	44	56	0.46
C807XC16	1.5	M16X24	56.5	13	14.5	39	56	65	0.90
C807XC20	2.5	M20X30	67	14	17	42	58	70	1.15
C807XC24	3.2	M24X36	80	18	19	52	73	88	2.05
C807XC30	4.5	M30X43	101	22	27	62	80	106	4.00
C807XC36*	7	M36X54	125	37	38	80	95	154	6.70
C807XC42*	9	M42X64	148	40	41	90	105	170	9.50
C807XC48*	12	M48X72	165	45	47	95	120	185	13.40

\*M36-M42-M48 dimensions might vary

## LIFTING RING WELD-ON TYPE DOUBLE BASE, Grade 100

Part #	Rated Load (metric tons)	Dimensions (mm)								Weight (kg)
		A	B	C	D	E	F	G	H	
180° Pivoting										
C820X04	4	14	65	48	29	134	14	60	79	0.73
C820X067	6.7	20	83	60	39	169	16	88	103	1.80
C820X10	10	22	96	65	48	196	19.5	98	118	3.00
C820X16	16	31	126	90	55	264	29	127	155	5.75
C820X30	30	42	175	130	79	371	45	157	217	16.00

## LIFTING RING WELD-ON TYPE SINGLE BASE, Grade 100

Part #	Rated Load (metric tons)	Dimensions (mm)								Weight (kg)
		A	B	C	D	E	F	G	H	
180° Pivoting										
C830X015M	1.5	14	65	38	25	66	16	31	79	0.39
C830X025M	2.5	16	75	45	27	77	18	34.5	91	0.59
C830X040M	4	18	84	51	32	87	20	40	102	0.87
C830X067M	6.7	24	117	67.3	44	115	26	58.5	141	2.23
C830X010M	10	31	126	67	55	129	28.5	70.5	157	3.33
C830X016M	16	45	174	100	69	190	42	87	219	9.28

# WEB SLINGS: EYE & EYE AND ENDLESS SLINGS

## FEATURES:

Heavy Duty Polyester Web Slings available in 1 or 2 ply. Lengths are measured from bearing point to bearing point. Eyes are reinforced with polyester wear pads. Work load limits are rated at 5:1 design factor.



## SPECIFICATIONS AND DIMENSIONS

### EYE & EYE SLINGS, 1-PLY HEAVY DUTY (Class 7)

Part #	Sling Width (in)	Eye Length (in)	Work Load Limit (lbs)			Base Length (ft)	Weight (lbs)	Add Weight/ft
			Vertical	Choker	Basket			
EE 1901	1	10	1,600	1,280	3,200	3	0.40	0.06
EE 1902	2	12	3,200	2,500	6,400	3	0.80	0.12
EE 1903	3	12	4,800	3,840	9,600	3	1.40	0.18
EE 1904	4	12	6,400	5,000	12,800	3	1.90	0.24

Note: 1" & 2" slings have flat eyes. 3" & 4" slings have tapered eyes (folded in half)

### EYE & EYE SLINGS, 2-PLY HEAVY DUTY (Class 7)

Part #	Sling Width (in)	Eye Length (in)	Work Load Limit (lbs)			Base Length (ft)	Weight (lbs)	Add Weight/ft
			Vertical	Choker	Basket			
EE 2901	1	10	3,200	2,500	6,400	3	0.50	0.13
EE 2902	2	12	6,400	5,000	12,800	3	0.90	0.25
EE 2903	3	12	8,800	7,040	17,600	3	1.70	0.38
EE 2904	4	12	12,000	9,600	24,000	3	2.30	0.50

Note: 1" & 2" slings have flat eyes. 3" & 4" slings have tapered eyes (folded in half)

### ENDLESS WEB SLING, 1-PLY HEAVY DUTY (Class 7)

Part #	Sling Width (in)	Work Load Limit (lbs)			Base Length (ft)	Weight (lbs)	Add Weight/ft
		Vertical	Choker	Basket			
EN 1901	1	3,200	2,560	6,400	3	0.40	0.12
EN 1902	2	6,400	5,000	12,800	3	0.80	0.24
EN 1903	3	9,400	7,520	18,800	3	1.30	0.36
EN 1904	4	12,400	9,920	24,800	3	1.70	0.48

### ENDLESS WEB SLING, 2-PLY HEAVY DUTY (Class 7)

Part #	Sling Width (in)	Work Load Limit (lbs)			Base Length (ft)	Weight (lbs)	Add Weight/ft
		Vertical	Choker	Basket			
EN 2901	1	6,400	5,000	12,800	3	0.80	0.25
EN 2902	2	12,400	9,920	24,800	3	1.60	0.50
EN 2903	3	17,600	14,080	35,200	3	2.60	0.76
EN 2904	4	22,000	17,600	44,000	3	3.40	1.00

## WEAR PADS



### HIGH DENSITY FELT WEAR PADS. 5/16" thick

Part #	Sleeve Width (in)	Sleeve Length (in)	For Round Slings:	For Web Slings:
			DR1, DR2, DR3	EE & EN 1" & 2"
WP4X12	4	12	DR4, DR5, DR6, DR 7	EE & EN 3" & 4"
WP6X12	6	12		

Never exceed work load limit. Always follow your domestic safety regulations.

# SAFETY WARNINGS

All slings come standard with comprehensive warning tags and bulletins. Together they offer safety information that can be used not only as a “warning” system but also as part of a larger occupational training system. These tags and bulletins provide a convenient guide for safety and inspection guidelines\*, reducing accidents caused by misuse.

*\*Not to be used in place of proper training*



# CERTIFICATION

Each sling is serialized and comes with a signed manufacturer's certificate of compliance for meeting ASME B30.9 and WSTDA standards including batch test conformation of a 5x design factor. The certificates are issued for the serial number range covered by the batch.



# LASHING STRAPS – TIE DOWNS

## FEATURES:

Two part heavy duty wide handle, 2" ratchet style webbing assemblies. For load securing. Meets D.O.T regulations.



Part #	Load (lbs)	Strength (lbs)	Style	Width (in)	Length (ft)	Weight (lbs)
TD 0227	3,300	10,000	Flat Hook	2	27	6
TD 0230	3,300	10,000	Flat Hook	2	30	6.05

## FEATURES:

4" Winch strap assembly, Use this assembly with ratchet winches to secure the cargo to flat-bed trucks and trailer. Meets D.O.T and California Highway Patrol regulations.



Part #	Load (lbs)	Strength (lbs)	Style	Width (in)	Length (ft)	Weight (lbs)
WS 0427	5,000	15,000	Flat Hook	4	27	4.3
WS 0430	5,000	15,000	Flat Hook	4	30	4.6

**Never exceed work load limit. Always follow your domestic safety regulations.**

# DOUBLE JACKET ROUND SLINGS

## FEATURES:

Endless Polyester Round Sling lengths are measured from bearing point to bearing point and WLL's are rated vertically at 5:1 design factor. All standard round slings are double jacket.

## SPECIFICATIONS AND DIMENSIONS

Part #	Color	Work Load (lbs)			Base Length (ft)	Weight/ft (lbs)	Width at Load
		Vertical	Choker	Basket			
DR 1	PURPLE	2,600	2,100	5,200	3	0.23	1-1/2"
DR 2	GREEN	5,300	4,200	10,600	3	0.35	1-3/4"
DR 3	YELLOW	8,400	6,700	16,800	3	0.57	2-1/8"
DR 4	TAN	10,600	8,500	21,200	3	0.69	2-1/4"
DR 5	RED	13,200	10,600	26,400	3	0.91	2-3/4"
DR 6	WHITE	16,800	13,400	33,600	3	1.04	2-7/8"
DR 7	BLUE	21,200	17,000	42,400	3	1.40	3-1/2"
DR 9	ORANGE	31,000	24,800	62,000	8	2.10	4"
DR 12	ORANGE	66,000	52,800	132,000	12	3.60	5-1/2"
DR 13	ORANGE	90,000	72,000	180,000	12	4.90	7"



## ALLOY SLING HOOKS FOR SYNTHETIC SLINGS



PURPLE  
SYNTHETIC  
ALLOY SLING HOOK



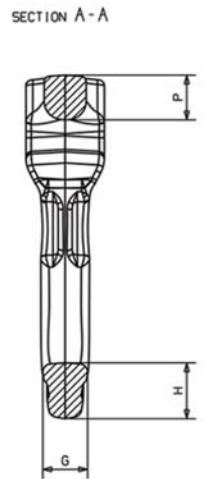
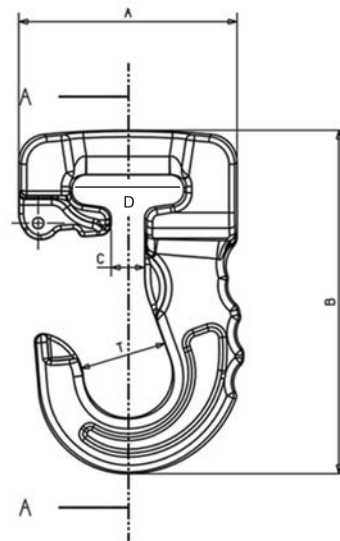
GREEN  
SYNTHETIC  
ALLOY SLING HOOK



YELLOW  
SYNTHETIC  
ALLOY SLING HOOK



RED  
SYNTHETIC  
ALLOY SLING HOOK



Synthetic Sling Hook color coded matching Round Sling of same color. WLL are rated at 5:1 design factor.

Part #	Color	Dimensions (in)								Weight (lbs)	WLL (lbs)
		A	B	C	D	G	H	P	T		
CJ01T1	PURPLE	3.07	4.84	0.47	1.61	0.67	0.79	0.63	1.22	1.54	2,600
CJ02T2	GREEN	3.58	5.83	0.75	1.77	0.83	1.02	0.67	1.57	2.65	5,300
CJ03T3*	YELLOW	4.45	6.89	0.83	2.17	0.98	1.26	0.98	1.97	4.85	8,400
CJ05T5	RED	5.21	8.78	1.57	2.76	1.42	2.34	1.42	2.34	9.90	13,200
CJ08T8	BLUE	7.28	12.48	1.97	3.94	1.77	2.48	2.17	3.15	27.50	21,200

\* Also fits a 2" 2-ply Eye & Eye or 2" 1-ply Endless Sling

Never exceed work load limit. Always follow your domestic safety regulations.



**AMH MAIN OFFICE | CHICAGO, ILLINOIS**

**All Material Handling, Inc.**  
345 N. Canal Street, Suite C1  
Chicago, IL 60606  
Toll Free: (877) 543-8264 (877) LIFT-AMH  
Phone: (312) 698-8658  
Fax: (312) 637-9343  
sales@allmaterialhandling.com



**SERVICE CENTER | ANKENY, IOWA**

**Central Service & Supply, Inc.**  
4219 E. 50th Street  
Des Moines, IA 50317  
Toll Free: (800) 247-2400  
Phone: (515) 964-8600  
Fax: (515) 309-0667



**SERVICE CENTER | HOUSTON, TEXAS**

**All Material Handling, Inc. at Merit Sales**  
3605 Willowbend, Suite #540  
Houston, TX 77054  
Phone: (713) 664-7723  
Fax: (713) 664-1144



**SERVICE CENTER | LOS ANGELES, CALIFORNIA**

**All Material Handling, Inc. at Western Warehouse & Supply**  
2260 S. Haven Avenue, Suite C  
Ontario, CA 91761  
Phone: (877) 543-8264  
Fax: (312) 637-9343  
sales@allmaterialhandling.com



**SERVICE CENTER | ATLANTA, GEORGIA**

**All Material Handling, Inc. at Merit Sales**  
774 GA. Hwy 11 S.W.  
Fieldstone Industrial Park  
Monroe, GA 30655  
Phone: (877) 637-9343  
Fax: (312) 637-9343

